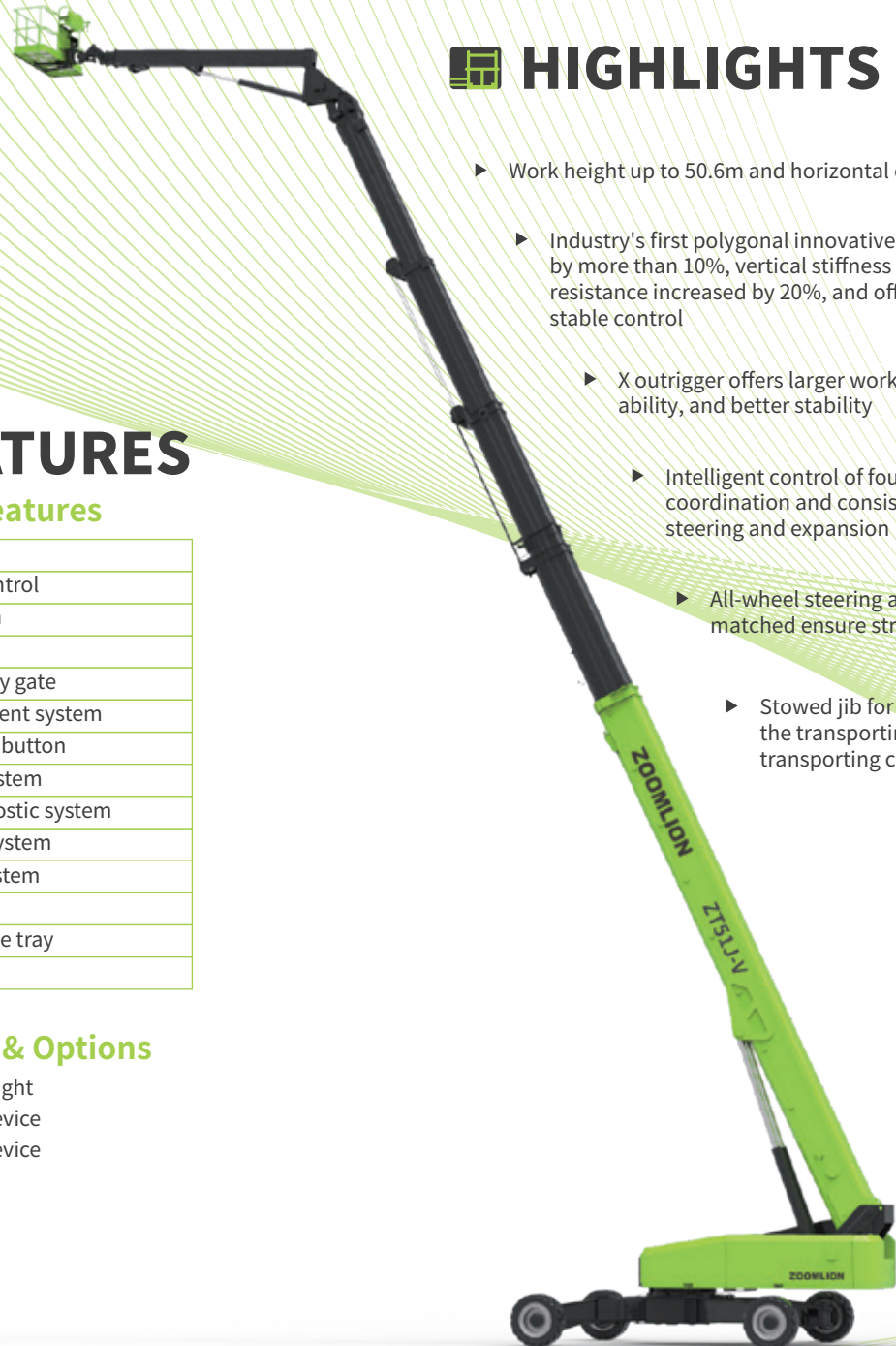


# ZOOMLION

## TELESCOPIC BOOM LIFT

### ZT51J-V

Comply with CE Standard



### HIGHLIGHTS

- ▶ Work height up to 50.6m and horizontal outreach up to 25m
- ▶ Industry's first polygonal innovative boom, boom weight reduced by more than 10%, vertical stiffness increased by 25%, torsion resistance increased by 20%, and offers small deformation and stable control
- ▶ X outrigger offers larger working envelope, stronger off-road ability, and better stability
- ▶ Intelligent control of four-wheel steering ensures coordination and consistency of outriggers during steering and expansion
- ▶ All-wheel steering angles are automatically matched ensure straight travel
- ▶ Stowed jib for ease of transportation, shortening the transporting length and cutting the transporting cost

### FEATURES

#### Standard Features

Horn
Proportional control
All motion alarm
Flashing beacon
Self-closing entry gate
Emergency descent system
Emergency stop button
Auto-leveling system
On-board diagnostic system
Tilt protection system
Load sensing system
4.3' Led display
Swing-out engine tray
Anemograph

#### Accessories & Options

- ▶ Platform work light
- ▶ Anti-collision device
- ▶ Anti-collision device

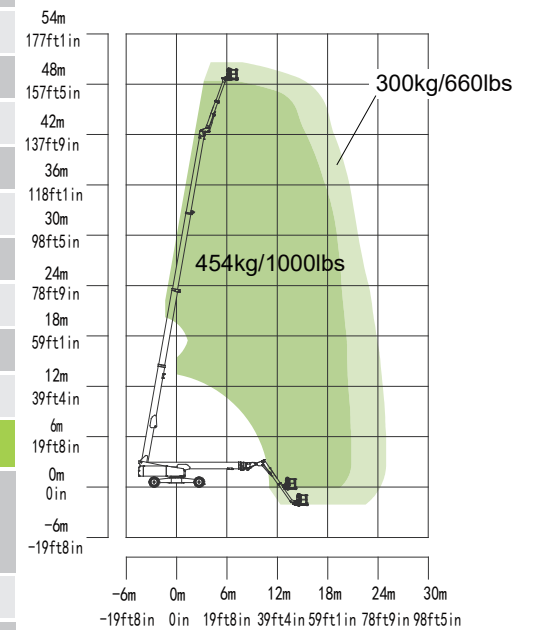
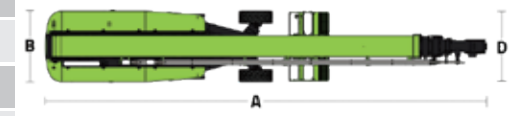
## ACCESS WITH ZOOMLION GREEN

Phone: 0086(731)-88353692  
E-mail: awp@zoomlion.com

Add: 701 Xulong Nan Lu, Xiangjiang New District, Changsha Hunan, China  
Web: www.zoomlion-access.com

## ZOOMLION

Model	ZT51J-V	
	Metric	Imperial
<b>Size</b>		
Work Height	50.6m	166ft
Platform Height	48.6m	159ft 5in
Horizontal Outreach	25m	82ft
A - Stowed Length	14.2m	46ft 7in
B - Stowed Width	2.5m	8ft 2in
C - Stowed Height	3.06m	10ft
D - Platform Length	2.44m	8ft
E - Platform Width	0.91m	3ft
F - Wheelbase	5.357/4.69m	17ft 7in/15ft 5in
Tread	2.5/5.15m	8ft 2in/16ft 11in
G - Ground Clearance	0.40m	1ft 4in
<b>Performance</b>		
Platform Capacity (Unrestricted/Restricted)	300/454kg	660/1000lb
Drive Speed (Stowed)	4.5km/h	2.8mph
Gradeability	45%(24°)	
Turning Radius (Inside)	6.79/2.57m	22ft 3in/8ft 5in
Turning Radius (Outside)	8.43/6.39m	27ft 8in/20ft 12in
Turntable Swing	360° continuous	
Platform Rotation	±90°	
Tail Swing	1.95m	6ft 5in
Jib (Range of Articulation)	125° (-55°~70°)	
Max. Wind Speed	12.5m/s	28mph
<b>Power</b>		
Engine	Cummins QSF3.8(China III) 74kW/2200rpm	
Fuel Tank Capacity	200L	52.8gal
Control Voltage	12V DC	
Hydraulic Tank Capacity	400L	105gal
Drive Mode	4WD	
Steering Mode	4WS/Front wheel/Crab	
<b>Tire</b>		
Type	Foam-filled Tires	
<b>Weight</b>		
Gross	25000kg	55116lb



Range of Motion ZT51J-V

ZOOMLION ACCESS reserves the right to make specification and/or equipment changes without prior notification. Product specifications are updated to January, 2024.