

ZOOMLION

TELESCOPIC BOOM LIFT

ZT72J-V

Comply with CE Standard



HIGHLIGHTS

- ▶ Highest telescopic boom lift that work height up to 72.3m and horizontal outreach up to 32m
- ▶ Innovative polygonal boom with light weight and small side deformation for stable operation
- ▶ X outrigger offers larger working envelope, stronger off-road ability, and better stability
- ▶ 13.1m ultra-long telescopic jib for large work envelope and convenient application
- ▶ Ultra long boom with multiple sensors for safe and efficient application
- ▶ Double lifting cylinder layout provides more smooth lifting, better boom rigidity and less platform shakes

FEATURES

Standard Features

Horn
Proportional control
All motion alarm
Flashing beacon
Self-closing entry gate
Emergency descent system
Emergency stop button
Auto-leveling system
On-board diagnostic system
Tilt protection system
4.3' Led display
Swing-out engine tray
Anemograph
Anti-crushing device

Accessories & Options

- ▶ Platform work light
- ▶ Anti-collision device
- ▶ AC power to platform

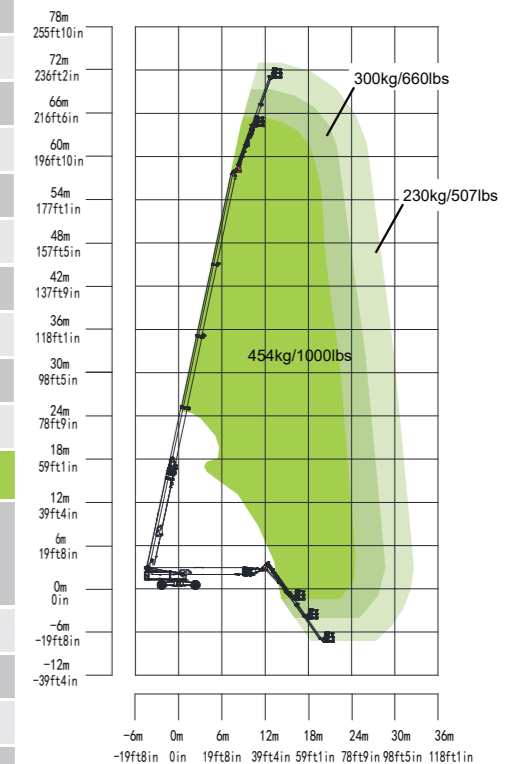
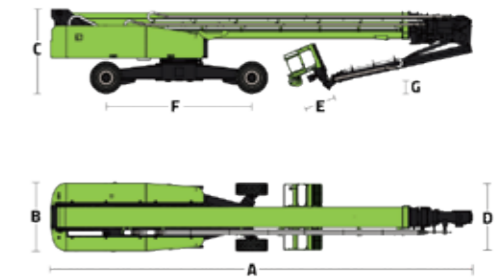
ACCESS WITH ZOOMLION GREEN

Phone: 0086(731)-88353692
E-mail: awp@zoomlion.com

Add: 701 Xulong Nan Lu, Xiangjiang New District, Changsha Hunan, China
Web: www.zoomlion-access.com

ZOOMLION

Model	ZT72J-V	
	Metric	Imperial
Size		
Work Height	72.3m	237ft 2in
Platform Height	70.3m	230ft 8in
Horizontal Outreach	32.6m	106ft 11in
A - Stowed Length	16.5m	54ft 2in
B - Stowed Width	2.5m	8ft 2in
C - Stowed Height	3.16m	10ft 4in
D - Platform Length	2.44m	8ft
E - Platform Width	0.91m	3ft
F - Wheelbase	6.2/5.4m	20ft 3in/17ft 9in
Tread	2.5/5.6m	8ft 2in/18ft 4in
G - Ground Clearance	0.40m	1ft 4in
Performance		
Platform Capacity (Unrestricted/Restricted)	230/300/454kg	510/660/1000lb
Drive Speed (Stowed)	4.5km/h	2.8mph
Gradeability	40% (22°)	
Turning Radius (Inside)	7.42/2.69m	24ft 4in/8ft 10in
Turning Radius (Outside)	9.8/7.39m	32ft 2in/24ft 3in
Turntable Swing	360° continuous	
Platform Rotation	±90°	
Tail Swing	2.1m	6ft 11in
Jib (Range of Articulation)	125° (-55°~70°)	
Max. Wind Speed	12.5m/s	28mph
Power		
Engine	Cummins F3.8 (Eu Stage V) Cummins F4.5 (China Stage IV) Cummins QSF3.8 (China Stage III)	
Fuel Tank Capacity	200L	52.8 us gal
Control Voltage	12V DC	
Hydraulic Tank Capacity	480L	127 us gal
Drive Mode	4WD	
Steering Mode	4WS/Front wheel/Crab	
Tire		
Type	Foam-filled Tires	
Weight		
Gross	38300kg	84437lb



Range of Motion ZT72J-V

ZOOMLION ACCESS reserves the right to make specification and/or equipment changes without prior notification. Product specifications are updated to June, 2024.