

ZOOMLION CRAWLER CRANE ZCC17000



ZOOMLION

ZOOMLION

Zoomlion Heavy Industry Science & Technology Co.,Ltd.

Add: No.677, Lugu Road, Zoomlion Industrial Park, Changsha, Hunan, China, 410205

Copyright©2023 Zoomlion. All rights reserved. Reproduction and copying of any part of contents is not allowed for any purposes without Zoomlion's approval.



Product specifications are subject to change without notice and obligation. The photographs and/or drawing in this document are for illustrative purposes only. Please consult your local ZOOMLION dealer for more information.
website:en.zoomlion.com 2023.07.28

VISION CREATES FUTURE

ZOOMLION

CONTENTS 目录

ZCC17000	TECHICAL HIGHLIGHT	01
ZCC17000	DEMENSIONS	01
ZCC17000	TECHNICAL PARAMENTS	03
ZCC17000	DIMENSIONS AND WEIGHTS OF MAJOR PARTS IN TRANSPORT	05
ZCC17000	TECHNICAL DESCRIPTION	17
ZCC17000	WORKING RADIUS AND LIFTING CAPACITY CHARTS	18



TECHICAL HIGHLIGHT

Maximum lifting weight 1250t, maximum lifting moment 17008tm, the first to achieve 190m height wind power installation crawler crane.

145m: 153+7@330t; 170 m: 177+9@230t; 180m: 186+9@205t; 190 m: 195+9@185t

Excellent configuration:

Large chassis :9.8 meters large gauge chassis, stable operation.

Strong boom: 4.2x3m thick pipe boom with large stamping surface, 48m super lifting system, strong lifting capacity.

High configuration :1600 tons lifting, amplitude, walking mechanism, wire rope specifications, safe and efficient.

Efficient operation:

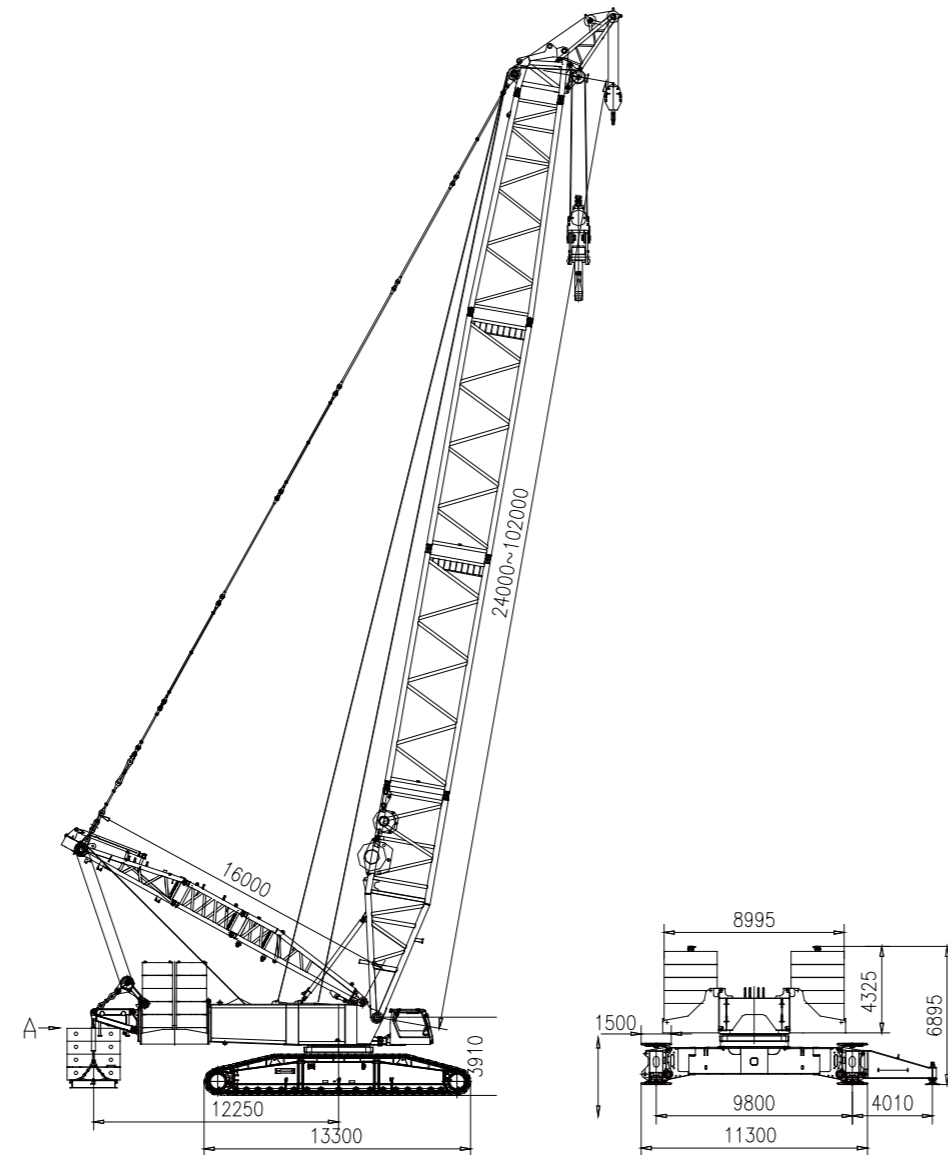
Multi-pump - multi-motor confluence technology, operation efficiency increased by 20%.

Multi-super system installation mode, flexibly adapt to the construction environment.

Automatic amplitude compensation technology, accurate positioning, saving adjustment time.

DIMENSIONS

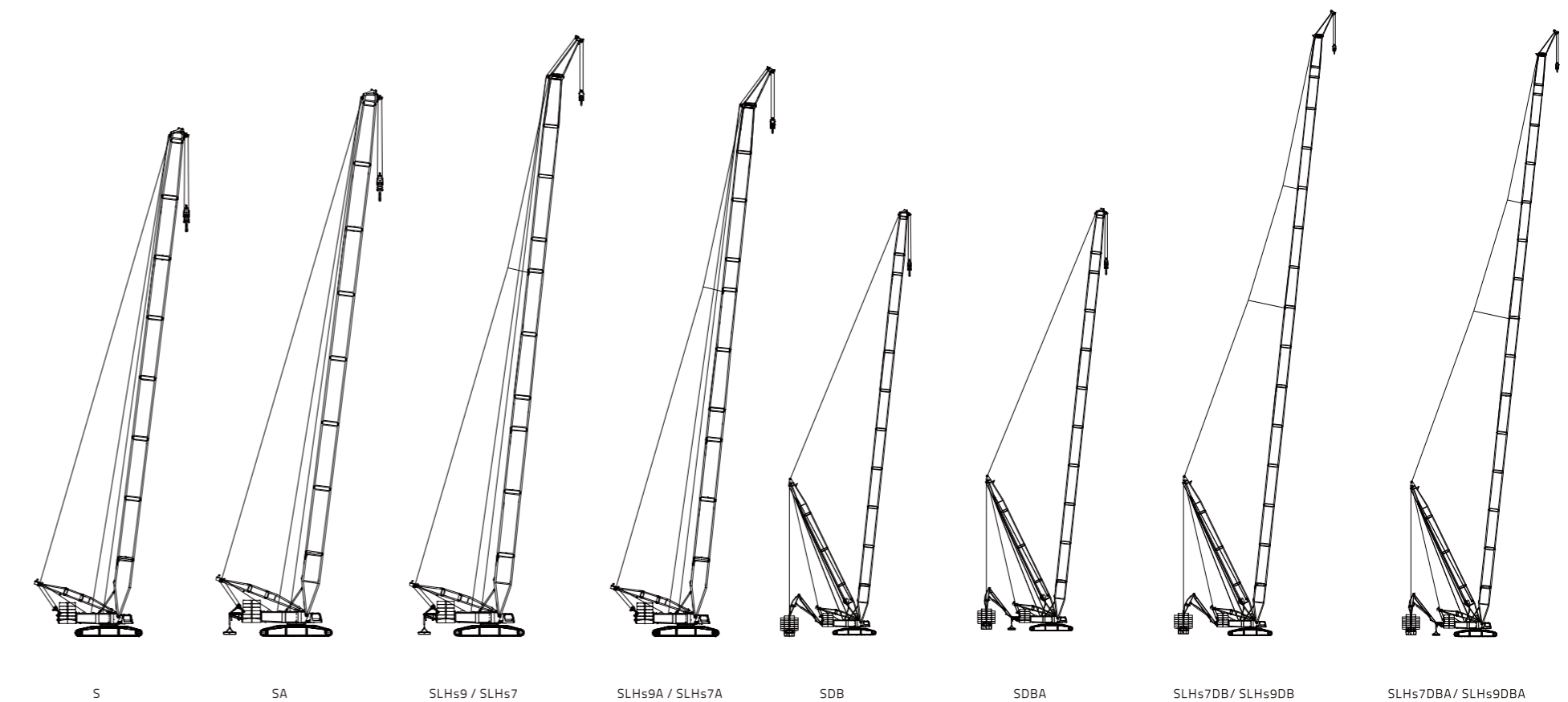
Overall dimensions of the crane



DIMENSIONS

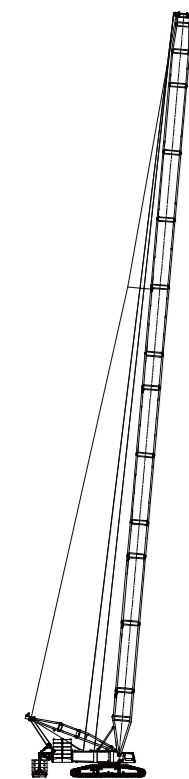
Illustrations of operating modes

Code	Operating mode	Boom combination	Code	Operating mode	Boom combination
S	Standard heavy main boom operating mode	S=24~84m	SDB	Superlift heavy main boom operating mode	S=48~126m
SA	Standard heavy main boom operating mode (with attached counterweight)	S=24~102m	SDBA	Superlift heavy main boom operating mode (with attached counterweight)	S=48~126m
SLHs9	Standard operating mode for wind turbine	SL=96~111m Hs=9m	SLHs9DB	Superlift operating mode for wind turbine	SL=108~189m Hs=9m
SLHs7	Standard heavy main boom operating mode	SL=60~111m Hs=7m	SLHs7DB	Superlift operating mode for wind turbine	SL=108~189m Hs=7m
SLHs9A	Standard heavy main boom operating mode (with attached counterweight)	SL=96~132m Hs=9m	SLHs9DBA	Superlift heavy main boom operating mode(with attached counterweight)	SL=108~195m Hs=9m
SLHs7A	Standard operating mode for wind turbine	SL=60~132m Hs=7m	SLHs7DBA	Superlift operating mode for wind turbine(with attached counterweight)	SL=108~195m Hs=7m

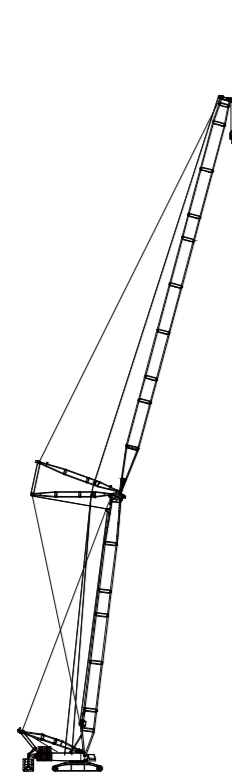


DIMENSIONS

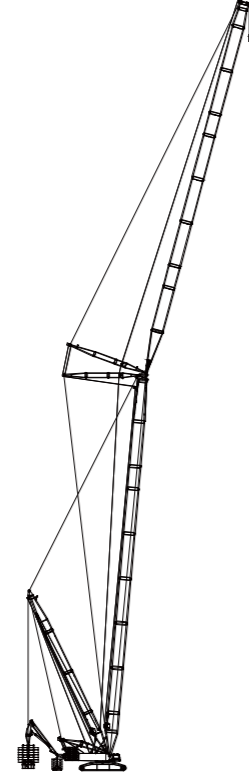
Code	Operating mode	Boom combination
SLA	Standard light main boom operating mode(with attached counterweight)	SL=96-132m
SWA	Standard luffing jib operating mode (with attached counterweight)	S=42-66m W=30-102m
SWDBA	Superlift luffing jib operating mode (with attached counterweight)	S=48-102m W=30-102m



SLA



SWA



SWDBA

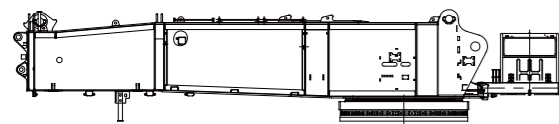
TECHNICAL PARAMENTS

Item		Unit	Values
Max. lifting moment		t xm	17008
Standard heavy main boom	S	Max. lifting capacity x radius	t xm 885x6
		Main boom length	m 24-84
Standard heavy main boom (with attached counterweight)	SA	Max. lifting capacity x radius	t xm 1025x6
		Main boom length	m 24-102
Superlift heavy main boom	SDB	Max. lifting capacity x radius	t xm 1250x12
		Main boom length	m 48-126
Superlift heavy main boom (with attached counterweight)	SDBA	Max. lifting capacity x radius	t xm 1250x12
		Main boom length	m 48-126
Standard operating mode for wind turbine	SLHs9	Max. lifting capacity x radius	t xm 248x17
		Length of jib for wind turbine	m 9
		Main boom length	m 96-111
Standard operating mode for wind turbine (with attached counterweight)	SLHs9A	Max. lifting capacity x radius	t xm 280x20
		Length of jib for wind turbine	m 9
		Main boom length	m 96-132
Standard operating mode for wind turbine	SLHs7	Max. lifting capacity x radius	t xm 330x15
		Length of jib for wind turbine	m 7
		Main boom length	m 60-111
Standard operating mode for wind turbine (with attached counterweight)	SLHs7A	Max. lifting capacity x radius	t xm 330x18
		Length of jib for wind turbine	m 7
		Main boom length	m 60-132
Standard light main boom (with attached counterweight)	SLA	Max. lifting capacity x radius	t xm 434x14
		Main boom length	m 90-132
Standard luffing jib (with attached counterweight)	SWA	Max. lifting capacity x radius	t xm 359x18
		Main boom length	m 42-66
		Luffing jib length	m 30-102
Superlift luffing jib (with attached counterweight)	SWDBA	Max. lifting capacity x radius	t xm 650x22
		Main boom length	m 48-102
Luffing jib length	m 30-102		

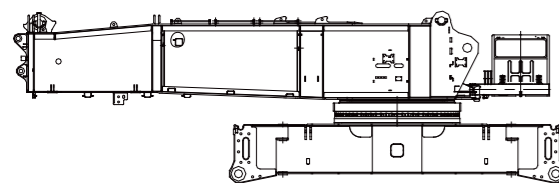
TECHNICAL PARAMENTS

Item		Unit	Values
Superlift operating mode for wind turbine		Max. lifting capacity x radius	t xm 280x26
		Length of jib for wind turbine	m 9
		Main boom length	m 108-189
		Max. lifting capacity x radius	t xm 280x26
Superlift operating mode for wind turbine (with attached counterweight)		Length of jib for wind turbine	m 9
		Main boom length	m 108-195
Superlift operating mode for wind turbine		Max. lifting capacity x radius	t xm 330x28
		Length of jib for wind turbine	m 7
		Main boom length	m 108-189
		Max. lifting capacity x radius	t xm 330x28
Superlift operating mode for wind turbine (with attached counterweight)		Length of jib for wind turbine	m 7
		Main boom length	m 108-195
Main hoisting winch I & II		Single rope speed of the outermost layer	m/min 0-162
		Wire rope diameter	mm 32
		Single rope tension	t 23.5
Main derricking mechanism		Single rope speed of the outermost layer	m/min 0-2x49
		Wire rope diameter	mm 32
		Single rope tension	t 23.5
Superlift derricking mechanism		Single rope speed of the outermost layer	m/min 0-152
		Wire rope diameter	mm 32
		Single rope tension	t 23.5
Luffing jib derricking mechanism		Single rope speed of the outermost layer	m/min 0-152
		Wire rope diameter	mm 32
		Single rope tension	t 23.5
Derrick boom		m	48
Slewing speed		rpm	0-1.0
Crawling speed		km/h	0-0.95
Max. gradeability		%	15
Total weight of the crane (with a basic boom of 24m and a main hook)		t	694
Ground pressure of operating mode with basic boom		MPa	0.19
Max. transport weight of a single piece		t	62
Suspended ballast		t	500
Slewing radius of suspended ballast		m	18-29
Rear counterweight		t	250
Central ballast		t	96
Attached counterweight		t	107

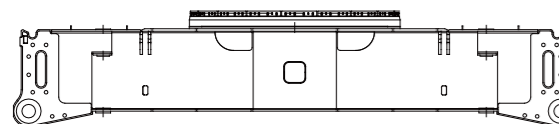
DIMENSIONS AND WEIGHTS OF MAJOR PARTS IN TRANSPORT



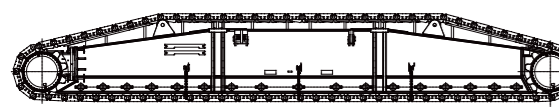
Basic machine	Detached
Length (L)	14500 mm
Width (W)	3495 mm
Height (H)	3030 mm
Weight	62t



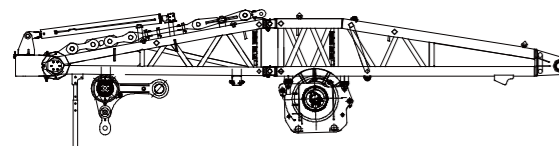
Basic machine	Detached
Length (L)	14915 mm
Width (W)	3960 mm
Height (H)	4670 mm
Weight	100t



Chassis frame	Detached
Length (L)	9070 mm
Width (W)	3960 mm
Height (H)	1800mm
Weight	38t

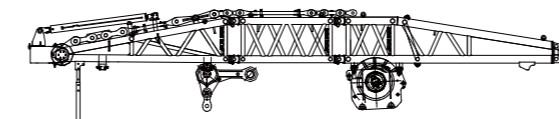


Crawler carrier	
Length(L)	13300 mm
Width (W)	1500 mm
Height (H)	2060 mm
Weight	56 t

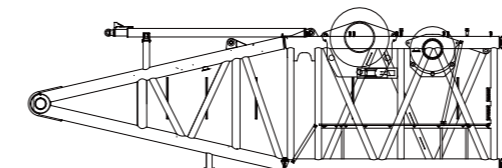


Lattice mast	2 sections
Length (L)	13970 mm
Width (W)	2700 mm
Height (H)	3300 mm
Weight	27t

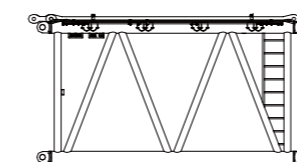
DIMENSIONS AND WEIGHTS OF MAJOR PARTS IN TRANSPORT



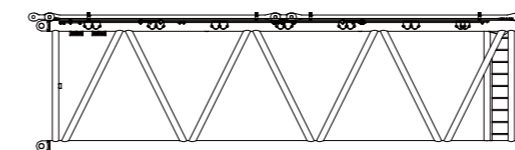
Lattice mast	3 sections
Length (L)	17270 mm
Width (W)	2700 mm
Height (H)	3300 mm
Weight	30 t



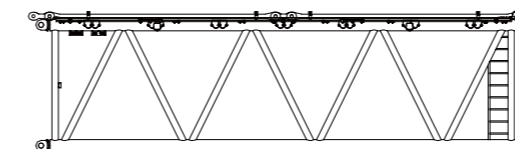
Main boom pivot section	G11A
Length (L)	11930 mm
Width (W)	4000 mm
Height (H)	3495mm
Weight	22.5 t
Note: Main boom pivot section with luffing winch (32.5 t)	



6m main boom intermediate section	G13A
Length (L)	6260 mm
Width (W)	3975 mm
Height (H)	3435 mm
Weight	6.4 t

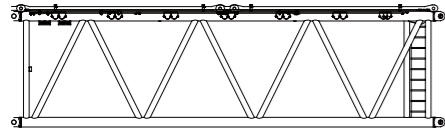


12m main boom intermediate section A for intermediate tensioner	G14AS
Length(L)	12260 mm
Width (W)	3975 mm
Height (H)	3465 mm
Weight	14.2t

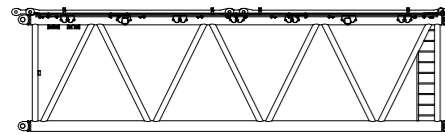


12m main boom intermediate section B for intermediate tensioner	G14BS
Length (L)	12260 mm
Width (W)	3975 mm
Height (H)	3465 mm
Weight	11.5t

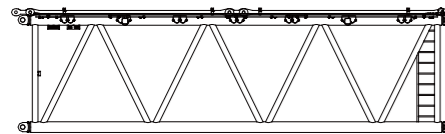
DIMENSIONS AND WEIGHTS OF MAJOR PARTS IN TRANSPORT



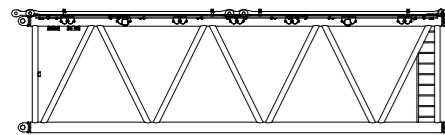
12m reducing section B	G18B
Length (L)	12230 mm
Width (W)	3945 mm
Height (H)	3450 mm
Weight	9.4t



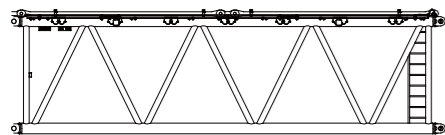
12m ultrawide reducing section A	G64
Length (L)	12260 mm
Width (W)	4500 mm
Height (H)	3480 mm
Weight	17.4 t



12m ultrawide reducing section B	G65
Length (L)	12260 mm
Width (W)	4500 mm
Height (H)	3480 mm
Weight	14.8 t

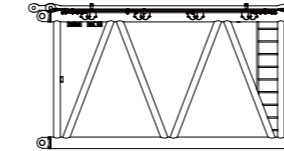


12m ultrawide main boom intermediate section A	G66A
Length(L)	12260 mm
Width (W)	4500 mm
Height (H)	3480 mm
Weight	17.4 t

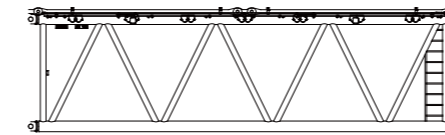


12m ultrawide main boom intermediate section B	G66B
Length (L)	12260 mm
Width (W)	4500 mm
Height (H)	3480 mm
Weight	14.8 t

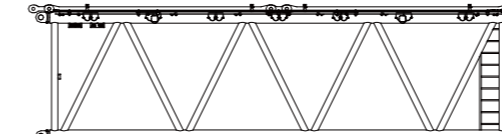
DIMENSIONS AND WEIGHTS OF MAJOR PARTS IN TRANSPORT



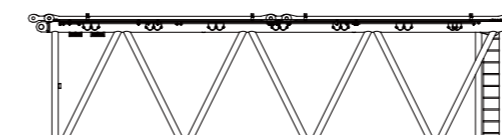
3m luffing jib intermediate section A	G23A
Length (L)	3200 mm
Width (W)	3395 mm
Height (H)	3195mm
Weight	2.46t



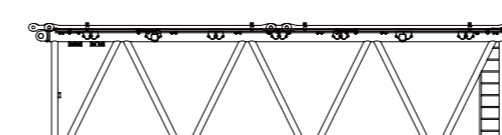
6m heavy luffing jib intermediate section B	G24B
Length (L)	6200 mm
Width (W)	3425 mm
Height (H)	3170 mm
Weight	5.2 t



12m heavy luffing jib intermediate section C	G25C
Length (L)	12200 mm
Width (W)	3445 mm
Height (H)	3200 mm
Weight	9.3 t

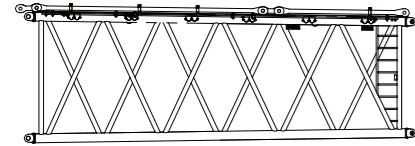


12m luffing jib intermediate section D for intermediate tensioner	G25DS
Length(L)	12200 mm
Width (W)	3445 mm
Height (H)	3200 mm
Weight	8.65t

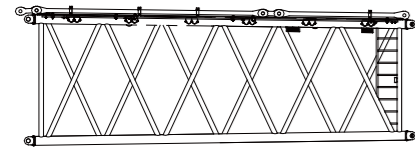


12m heavy luffing jib intermediate section D	G25D
Length (L)	12200 mm
Width (W)	3445 mm
Height (H)	3200 mm
Weight	8.24t

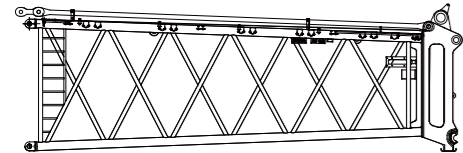
DIMENSIONS AND WEIGHTS OF MAJOR PARTS IN TRANSPORT



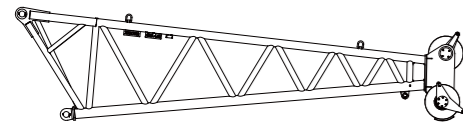
12m luffing jib intermediate section E		G25E
Length (L)	12200 mm	
Width (W)	3445 mm	
Height (H)	3200 mm	
Weight	7.4t	



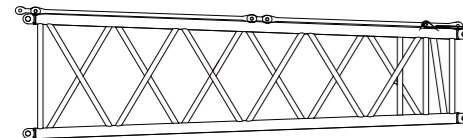
9.5m luffing jib reducing section		G29B
Length (L)	12125 mm	
Width (W)	3975 mm	
Height (H)	4245 mm	
Weight	6 t	



Special boom head section for wind turbine		G19A
Length (L)	9870mm	
Width (W)	3400mm	
Height (H)	3310mm	
Weight	7.4t	

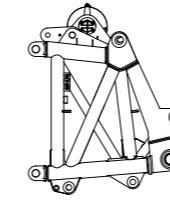


Jib for wind turbine - 9m		G20A
Length(L)	9185 mm	
Width (W)	1980 mm	
Height (H)	2150 mm	
Weight	5t	

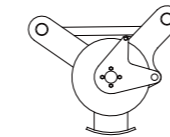


Main boom head section		G12
Length (L)	11560 mm	
Width (W)	3980 mm	
Height (H)	3370 mm	
Weight	12.1t	

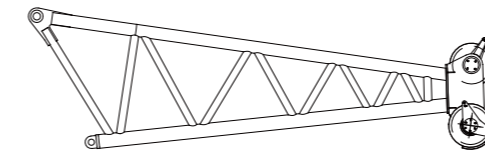
DIMENSIONS AND WEIGHTS OF MAJOR PARTS IN TRANSPORT



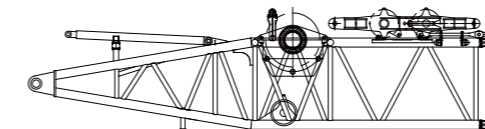
Main boom head adaptor		G62
Length (L)	2750 mm	
Width (W)	1800 mm	
Height (H)	3380 mm	
Weight	8.8t	



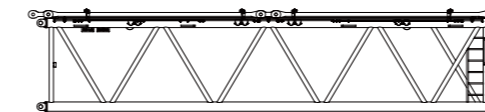
Pulley block for lifting		
Length (L)	1360 mm	
Width (W)	3380 mm	
Height (H)	1170 mm	
Weight	8.8t	



Jib for wind turbine - 7m		G20
Length (L)	7530 mm	
Width (W)	1980 mm	
Height (H)	2150 mm	
Weight	5t	

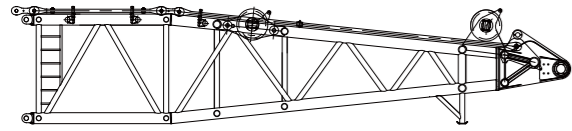


Derrick boom pivot section		G51A
Length(L)	12310 mm	
Width (W)	3190 mm	
Height (H)	3255 mm	
Weight	29.3t	

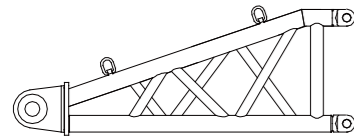


12m derrick boom intermediate section		G55
Length (L)	12200 mm	
Width (W)	2945 mm	
Height (H)	2695 mm	
Weight	8.9 t	

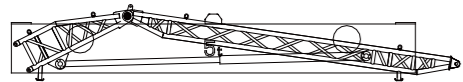
DIMENSIONS AND WEIGHTS OF MAJOR PARTS IN TRANSPORT



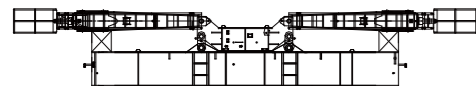
Derrick boom head section	
Length (L)	12320 mm
Width (W)	2945 mm
Height (H)	2615 mm
Weight	11.7 t



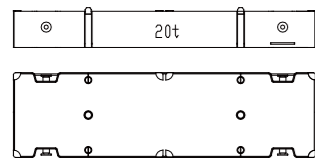
Front part of suspended ballast pushing mechanism	
Length (L)	3210 mm
Width (W)	2760 mm
Height (H)	1160 mm
Weight	1.5t



Center and rear part of suspended ballast pushing mechanism + cylinder	
Length (L)	15300 mm
Width (W)	2990 mm
Height (H)	2620 mm
Weight	10t

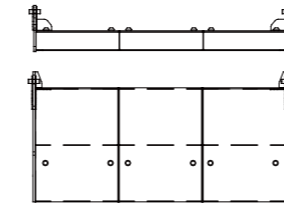


Suspended ballast base	
Length(L)	13375 mm
Width (W)	3330mm
Height (H)	2090 mm
Weight	27.5 t

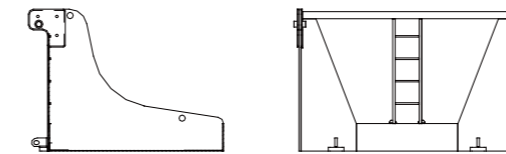


Counterweight plate of 20t	
Length (L)	5350 mm
Width (W)	1500 mm
Height (H)	705 mm
Weight	20 t

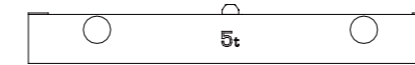
DIMENSIONS AND WEIGHTS OF MAJOR PARTS IN TRANSPORT



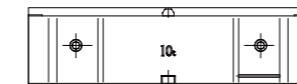
Central ballast support	
Length (L)	5025 mm
Width (W)	2490 mm
Height (H)	885 mm
Weight	18 t



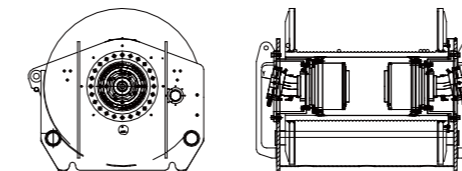
Rear counterweight frame	
Length (L)	3585mm
Width (W)	3040 mm
Height (H)	2235 mm
Weight	15.0 t



Counterweight plate of 5t	
Length (L)	2650 mm
Width (W)	1500 mm
Height (H)	385 mm
Weight	5.0 t

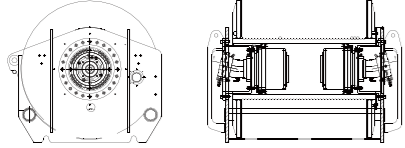


Counterweight plate of 10t	
Length(L)	2650 mm
Width (W)	1500 mm
Height (H)	705 mm
Weight	15 t



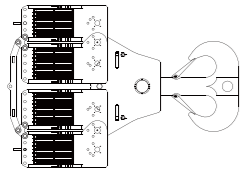
Main hoisting winch	
Length (L)	2378 mm
Width (W)	1729 mm
Height (H)	1600 mm
Weight	13.8 t

DIMENSIONS AND WEIGHTS OF MAJOR PARTS IN TRANSPORT



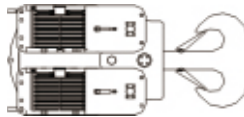
Luffing jib derricking

Length (L)	2172 mm
Width (W)	1850 mm
Height (H)	1720 mm
Weight	10.6 t



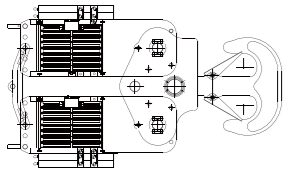
Main hook (1250t)

Length (L)	5415 mm
Width (W)	3800 mm
Height (H)	1170 mm
Weight	30.8 t



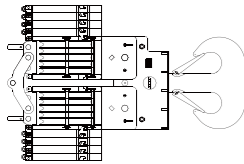
Hook (650t)

Length (L)	4290 mm
Width (W)	1960 mm
Height (H)	1060 mm
Weight	14.7 t



Hook (500t)

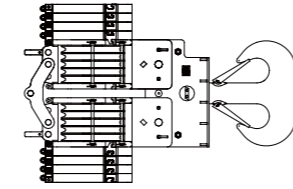
Length(L)	4005 mm
Width (W)	2360 mm
Height (H)	1040 mm
Weight	15.0 t



Hook (320t)

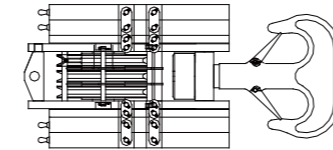
Length (L)	3065 mm
Width (W)	2010 mm
Height (H)	1010 mm
Weight	10.9 t

DIMENSIONS AND WEIGHTS OF MAJOR PARTS IN TRANSPORT



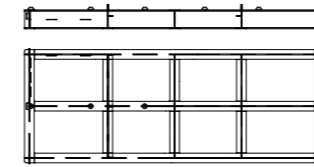
Hook (200t)

Length (L)	2770 mm
Width (W)	1120 mm
Height (H)	1040 mm
Weight	8.7t



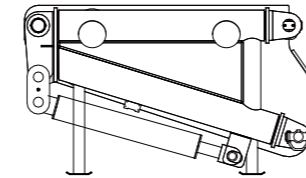
Hook (80t)

Length (L)	2045 mm
Width (W)	935 mm
Height (H)	800 mm
Weight	4.3 t



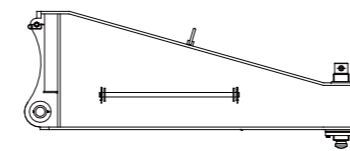
Attached counterweight pallet

Length (L)	6220 mm
Width (W)	2370 mm
Height (H)	505 mm
Weight	3.1t



Lattice structure

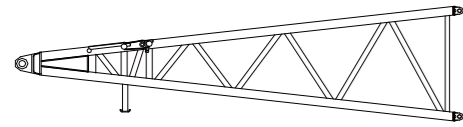
Length(L)	3900 mm
Width (W)	2300 mm
Height (H)	1500 mm
Weight	5t



Auxiliary outrigger

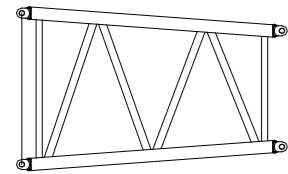
Length (L)	3825 mm
Width (W)	510 mm
Height (H)	1710 mm
Weight	3.0 t

DIMENSIONS AND WEIGHTS OF MAJOR PARTS IN TRANSPORT



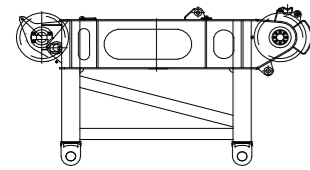
Luffing jib pivot section

Length (L)	11800 mm
Width (W)	3945 mm
Height (H)	3245 mm
Weight	9.7t



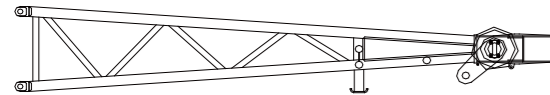
Luffing jib head section

Length (L)	5010 mm
Width (W)	3945 mm
Height (H)	3350 mm
Weight	4.2t



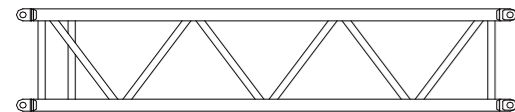
Luffing jib head adaptor

Length (L)	3970 mm
Width (W)	3050 mm
Height (H)	2510 mm
Weight	7.2 t



Head section of WA-frame 1

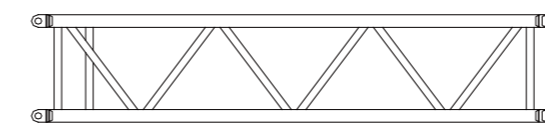
Length(L)	7960 mm
Width (W)	2860 mm
Height (H)	1550 mm
Weight	4.7t



Intermediate section of WA-frame 1

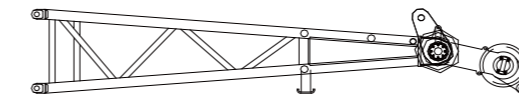
Length (L)	6170 mm
Width (W)	2860 mm
Height (H)	1550 mm
Weight	1.8t

DIMENSIONS AND WEIGHTS OF MAJOR PARTS IN TRANSPORT



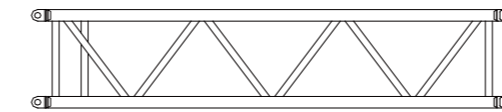
Pivot section of

Length (L)	8250 mm
Width (W)	3350 mm
Height (H)	1580 mm
Weight	6.7t



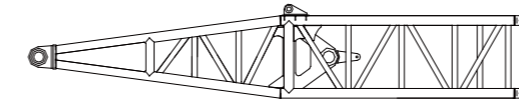
Head section of WA-frame 2

Length (L)	7510 mm
Width (W)	2860 mm
Height (H)	1550 mm
Weight	6.4t



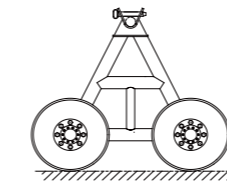
Intermediate section of WA-frame 2

Length (L)	6170 mm
Width (W)	2860 mm
Height (H)	1550 mm
Weight	2.2 t



Pivot section of WA-frame 2

Length(L)	8260 mm
Width (W)	3350 mm
Height (H)	1725 mm
Weight	5.4 t



Tyre

Length (L)	3320 mm
Width (W)	2140 mm
Height (H)	1880 mm
Weight	1.6 t

TECHNICAL DESCRIPTION



Power unit

Engine model: Wp17.
 Rated power/speed: 566kW/2100rpm.
 Max. output torque: 3000Nm/1200-1500rpm.
 Emission standard: China III for Non-road Mobile Machinery.
 The large volume of the fuel oil tank, which is 950L, provides long enough working hours of the engine.



Hydraulic system

The hydraulic system is composed of such parts as main pump, control valve, hydraulic motor, hydraulic oil tank, cooler, etc.
 Main hydraulic pump: of the variable plunger pump; driven by the engine.
 Oil source of auxiliary mechanism: constant pressure pump, gear pumps in series.
 Main control valve: pilot electro-hydraulic control valve.
 Main hydraulic return control: pump control system and joystick.
 Auxiliary mechanism control: solenoid directional control valve set (equipped with unloading overflow valve).
 Volume of hydraulic oil tank: 950L.
 Oil filter: oil filter for hydraulic oil return, precision filter for control oil circuit.
 Cooler: aluminum radiator (equipped with a hydraulic-drive fan).



Electrical system

The electrical system is powered by a battery of 24V with negative ground. All low-voltage electrical equipment conforms to the provisions in GB1497. The precision of each instrument shall not be lower than grade 1.5.
 Electrical equipment includes the following: power supply, engine start/flameout system, indicator light, alarm, illumination system, fan, wiper, horn, hoisting height limiter, hydraulic oil cooling fan, digital display, PLC controller, load moment limiter, engine preheating device, safety device, etc. All these devices guarantee safe operations and a good working environment for the crane.
 Engine, PLC controller, load moment limiter, and digital display are effectively connected together through the CAN bussing technology. It is also has the function of fault detection and self-diagnosis.



Winches

	Single rope speed of the outermost layer	m/min	0~162
Main hoisting winch I & II	Wire rope diameter	mm	32
	Single rope tension	t	23.5



Derricking mechanism

The derricking mechanism is composed of a constant axial plunger hydraulic motor, a pressure cutoff valve, a reducer, a normally-closed brake, a drum and wire rope.
 The derricking mechanism is equipped with a normally-closed brake, so it can be operated independently. It has the function of automatic locking that the drum is automatically locked by the braking device if the joystick is in the neutral position.

	Wire rope diameter	Max. single rope tension	Max. rope speed of the outermost layer
Main derricking winch	32mm	23.5t	2×49m/min
Superlift derricking winch	32mm	23.5t	152m/min
Luffing jib derricking winch	32mm	23.5t	152m/min



Slewing mechanism

The slewing mechanism is composed of a constant axial built-in plunger hydraulic motor, a gear reducer, a brake, a small gear and a slewing ring.
 A three-row roller-type external gearing slewing bearing and a slewing reducer are used by the mechanism to guarantee its strong load bearing capacity, high precision, and stable and precise slewing movement.
 The slewing mechanism is able to make movements through the stepless speed regulation from 0 to 1r/min.



Cab swiveling and pitching mechanism

The operator's cab can be swiveled in the horizontal plane for two positions (for transport and for operation), which helps to reduce the dimension during transport and guarantees the convenience for operation.
 The cab can be pitched through the pitching cylinder. It can be pitched up for 20° when the load is hoisted high for the convenience of the operator.



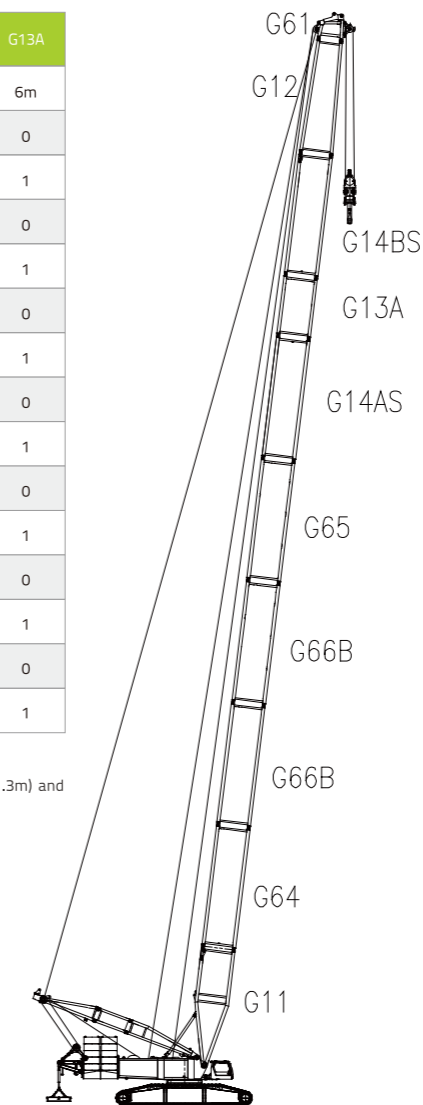
Crawling mechanism

The crawling mechanism has a high-speed gear and a low-speed gear. Both gears have the function of stepless speed regulation, which guarantees steady and stable operation.
 Track pads and track roller are made of alloy steel with high strength and good abrasive resistance. The tension of track pads can be adjusted through the hydraulic cylinder, which is fast and convenient.
 Track pads and track roller are made of high-strength and
 Crawling speed: 0.95 km/h;
 Gradeability: 15%.

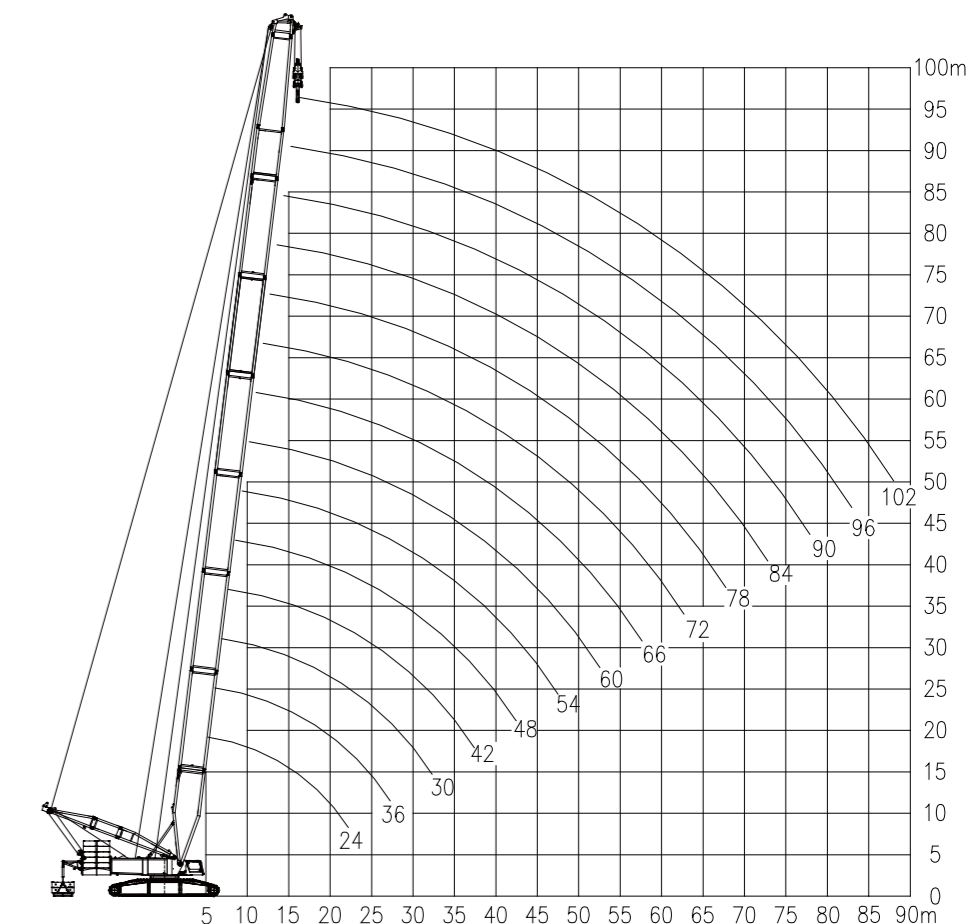
WORKING RADIUS AND LIFTING CAPACITY CHARTS

Lifting performance of operating mode S/SA

Code	G64	G66B	G65	G14AS	G14BS	G13A
Length	12m	12m	12m	12m	12m	6m
24m	0	0	0	0	0	0
30m	0	0	0	0	0	1
36m	0	0	0	0	1	0
42m	0	0	0	0	1	1
48m	0	0	0	1	1	0
54m	0	0	0	1	1	1
60m	1	0	1	0	1	0
66m	1	0	1	0	1	1
72m	1	0	1	1	1	0
78m	1	0	1	1	1	1
84m	1	1	1	1	1	0
90m	1	1	1	1	1	1
96m	1	2	1	1	1	0
102m	1	2	1	1	1	1



Main hook: —
 Unit: m



Boom combination of operating mode S (S=24m-84m) / SA (S=24-102m)

Hoisting height characteristic curves of operating mode S (S=24-84m) / SA (S=24-102m)

WORKING RADIUS AND LIFTING CAPACITY CHARTS

Lifting capacity chart of operating mode S

Main boom length: 24~84m Rear counterweight: 250t Central ballast: 96t												
Radius (m)	Main boom length (m)											
	24	30	36	42	48	54	60	66	72	78	84	
8	885											
9	767	767	834									
10	674	674	735	674	668							
11	602	602	655	602	598	592	592					
12	547	541	592	541	541	535	533	508	484			
14	499	493	541	493	490	490	478	456	436	417		
16	458	454	493	448	448	448	432	414	396	380	363	
18	385	385	423	385	385	376	361	347	334	321	308	
20	334	334	369	330	328	321	308	297	286	276	265	
22	280	280	324	280	279	278	268	258	249	240	231	
24	238	239	287	238	237	236	234	228	219	212	203	
26	207	207	249	206	205	204	201	200	195	188	180	
28		182	220	181	180	178	176	175	173	168	161	
30		162	196	161	159	158	155	154	152	150	145	
32		145	176	144	142	141	138	137	135	133	131	
34			159	130	128	127	124	122	120	119	116	
36			145	117	116	114	112	110	108	106	104	
38			133	107	105	104	101	99.7	97.5	95.8	93.2	
40				98	96.5	94.9	92	90.4	88.2	86.5	83.8	
44				89.9	88.4	86.9	83.9	82.3	80.1	78.3	75.6	
48					81.3	79.7	76.7	75.1	72.8	71	68.3	
52					69	67.5	64.5	62.8	60.6	58.7	56	
56						57.5	54.5	52.8	50.5	48.7	45.9	
60							46.1	44.5	42.2	40.3	37.5	
64								37.4	35.1	33.3	30.4	
68									29	27.2	24.3	
72										23.7	21.9	

Lifting capacity chart of operating mode SA

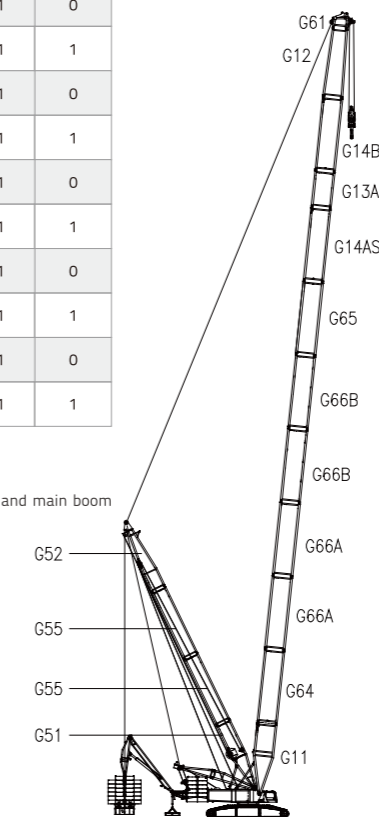
Main boom length: 24~102m Rear counterweight: 250t Attached counterweight: 107t Central ballast: 96t																	
Radius (m)	Main boom length (m)																
	24	30	36	42	48	54	60	66	72	78	84	90	96	102			
6	1025																
7	891	891	891														
8	789	783	783	783	783												
9	706	700	700	700	700	697	690										
10	639	633	633	633	629	630	623	624	618								
11	582	576	576	576	576	573	566	567	561	561							
12	535	531	531	529	525	525	521	515	515	513	509	478					
14	458	454	454	454	448	449	442	443	439	439	433	432	412	386			
16	401	397	397	395	391	391	385	385	382	379	375	372	363	355			
18	354	354	350	350	346	346	340	340	334	334	330	326	318	311			
20	315	315	315	312	309	309	305	303	299	297	293	289	281	275			
22	283	283	283	281	277	277	273	271	267	267	263	258	251	246			
24		253	253	252	251	248	245	245	242	238	238	233	226	221			
26		226	226	225	223	222	219	218	216	215	212	210	205	200			
28		203	203	202	201	199	197	195	193	192	189	188	185	182			
30			184	183	182	180	178	176	174	172	170	168	166	164			
32			168	167	166	164	161	160	158	156	154	152	149	148			
34			154	153	152	150	147	146	144	142	139	138	135	133			
36				141	140	138	135	134	131	130	127	125	123	121			
38					130	129	127	124	123	121	119	116	114	110			
40						119	118	115	113	111	109	107	105	102			
44							103	102	99	97.3	95.1	93.3	90.5	88.6	85.8	83.9	
48								88.8	85.8	84.1	81.8	80	77.2	75.2	72.4	70.5	
52									74.8	73.1	70.8	69	66.1	64.2	61.3	59.3	
56										63.8	61.5	59.7	56.8	54.8	51.9	49.9	
60											53.5	51.7	48.8	46.8	43.9	41.9	
64												46.5	44.7	41.9	39.9	36.9	34.9
68													38.6	35.8	33.8	30.9	28.8
72														30.4	28.4	25.5	23.5
76																23.6	20.7
80																	19.3

WORKING RADIUS AND LIFTING CAPACITY CHARTS

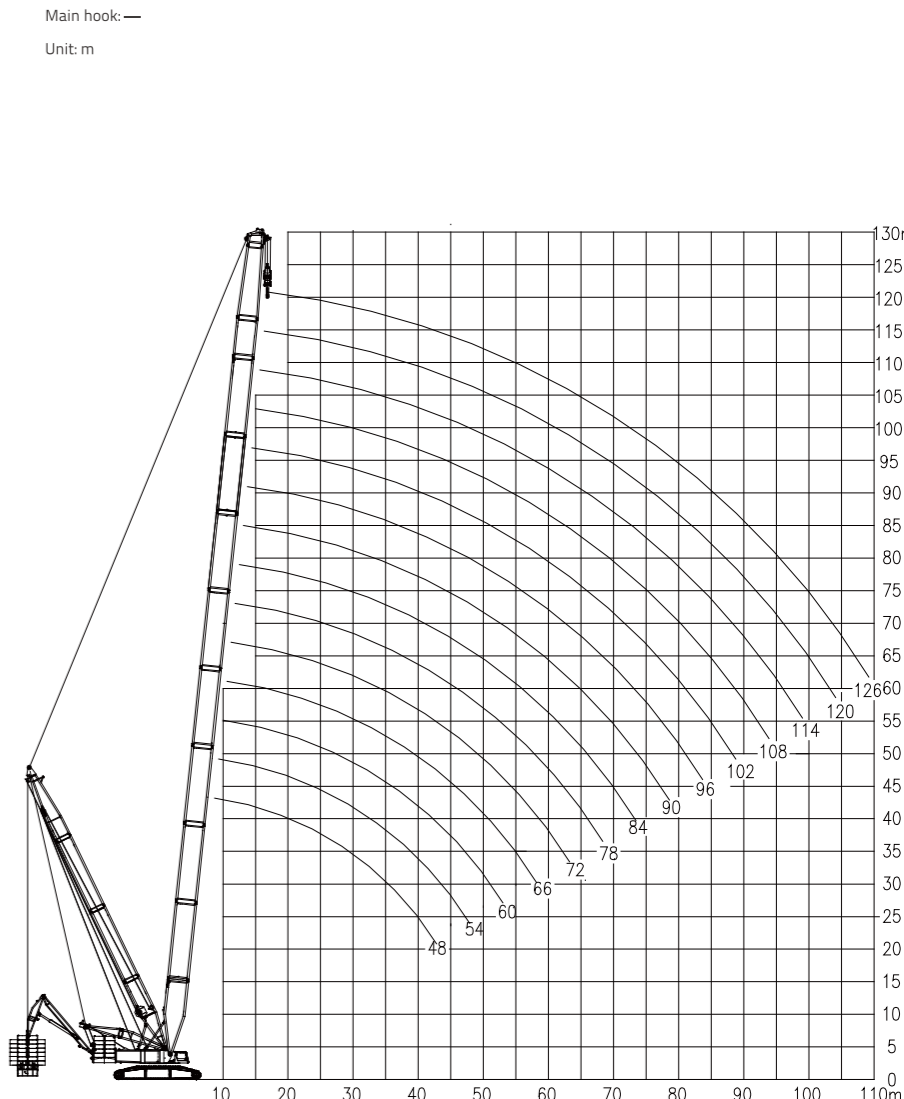
2.2 Lifting performance of operating mode SDB/SDBA

Code	G64	G66A	G66B	G65	G14AS	G14BS	G13A
Length	12m	12m	12m	12m	12m	12m	6m
48m	0	0	0	0	1	1	0
54m	0	0	0	0	1	1	1
60m	1	0	0	1	0	0	0
66m	1	0	0	1	0	0	1
72m	1	0	0	1	1	1	0
78m	1	0	0	1	1	1	1
84m	1	0	1	1	1	1	0
90m	1	0	1	1	1	1	1
96m	1	0	2	1	1	1	0
102m	1	0	2	1	1	1	1
108m	1	1	2	1	1	1	0
114m	1	1	2	1	1	1	1
120m	1	2	2	1	1	1	0
126m	1	2	2	1	1	1	1

Attention:
Main boom pivot section (G11-11.5m), main boom head section (G12-11.3m) and main boom head adaptor (G61-1.2m) are not indicated in the above table.



Boom combination of operating mode SDB / SDBA (S=48m~126m)



Hoisting height characteristic curves of operating mode SDB / SDBA (S=48m~126m)

WORKING RADIUS AND LIFTING CAPACITY CHARTS

Lifting capacity chart of operating mode SDBA

Main boom length: 48-126m Rear counterweight: 250t Central ballast: 96t Suspended ballast: 500t Attached counterweight: 0t Radius of suspended ballast: 29m														
Radius (m)	Main boom length (m)													
	48	54	60	66	72	78	84	90	96	102	108	114	120	126
9	1250													
10	1250	1128	1022											
11	1250	1128	1022	912										
12	1250	1128	1022	912	838	761								
14	1196	1128	1022	912	838	761	722	643	604					
16	1063	1049	1022	912	838	761	722	643	604	563	523	523		
18	933	932	930	912	838	761	722	643	604	563	523	523	481	440
20	840	840	836	834	833	761	722	643	604	563	523	523	481	440
22	763	763	757	757	755	753	722	643	604	563	523	523	481	440
24	700	699	694	693	691	688	684	643	604	563	523	523	481	440
26	645	643	639	637	636	633	629	629	604	563	523	523	481	440
28	598	596	592	590	588	586	582	582	578	563	523	523	481	440
30	557	554	550	549	547	544	542	541	537	535	523	523	481	440
32	521	519	515	513	511	509	505	503	501	499	495	494	481	440
34	489	486	482	481	478	476	474	472	468	466	462	461	457	440
36	461	458	454	452	451	448	445	442	441	439	435	433	429	426
38	435	433	429	426	424	423	419	417	414	413	409	407	402	401
40	411	409	405	403	401	400	396	395	391	389	385	384	379	378
44	372	369	366	363	361	360	356	354	351	350	346	344	339	338
48		336	333	330	328	326	323	321	318	316	313	310	306	304
52			304	302	299	298	294	293	289	287	283	281	277	276
56				277	275	273	269	268	265	263	259	258	253	251
60					254	251	249	247	244	242	238	236	232	230
64					235	233	230	228	224	223	219	217	213	211
68						216	214	212	209	206	203	200	197	194
72							199	197	194	192	188	186	182	180
76								183	180	178	175	172	169	166
80									170	167	165	162	160	154
84										156	154	150	148	143
88											143	140	138	134
92												130	128	124
96													121	119
100														116
104														114
108														111
111														108
114														106
117														104
120														100
123														98.3
126														93.2
129														91.3
132														84.7

Lifting capacity chart of operating mode SDB

Main boom length: 48-126m Rear counterweight: 250t Central ballast: 96t Suspended ballast: 500t Radius of suspended ballast: 27m														
Radius (m)	Main boom length (m)													
	48	54	60	66	72	78	84	90	96	102	108	114	120	126
9	1200													
10	1200	1128	1022											
11	1200	1128	1022	912										
12	1200	1128	1022	912	837	761								
14	1133	1128	1022	912	837	761	722	643	604					
16	993	993	989	912	837	761	722	643	604	563	522	522		
18	885	881	879	879	837	761	722	643	604	563	522	522	481	440
20	796	792	789	789	786	761	722	643	604	563	522	522	481	440
22	722	722	716	716	713	712	710	643	604	563	522	522	481	440
24	662	659	655	655	653	651	647	643	604	563	522	522	481	440
26	610	608	604	602	600	598	596	594	590	563	522	522	481	440
28	564	563	559	556	554	554	550	549	544	543	522	522	481	440
30	525	523	520	519	515	515	511	509	505	503	499	499	481	440
32	492	490	486	484	482	480	478	475	472	470	466	464	460	440
34	462	459	456	454	452	450	446	445	442	439	436	433	430	426
36	435	433	429	426	425	423	419	417	415	413	409	407	403	401
38	411	408	405	403	400	397	395	393	390	389	384	381	378	375
40	389	387	383	381	378	375	374	372	368	366	362	360	356	354
44	350	348	344	342	340	338	335	333	330	328	324	322	318	317
48		317	312	311	309	307	304	301	299	296	293	290	287	284
52			285	284	282	279	277	275	271	269	266	263	260	257
56				261	259	257	254	251	249	247	243	240	237	234
60					238	236	233	231	228	226	222	220	216	214
64						221	218	215	214	210	209	204	203	199
68							203	200	198	195	193	189	187	183
72								186	184	181	179	175	173	169
76									171	169	166	163	160	157
80										160	157	155	152	149
84											146	144	141	139
88												134	131	129
92													122	120
96														116
100														114
104														113
108														111
111														108
114														106
117														104
120														100
123														98.3
126														93.2
129														91.3
132														84.7

WORKING RADIUS AND LIFTING CAPACITY CHARTS

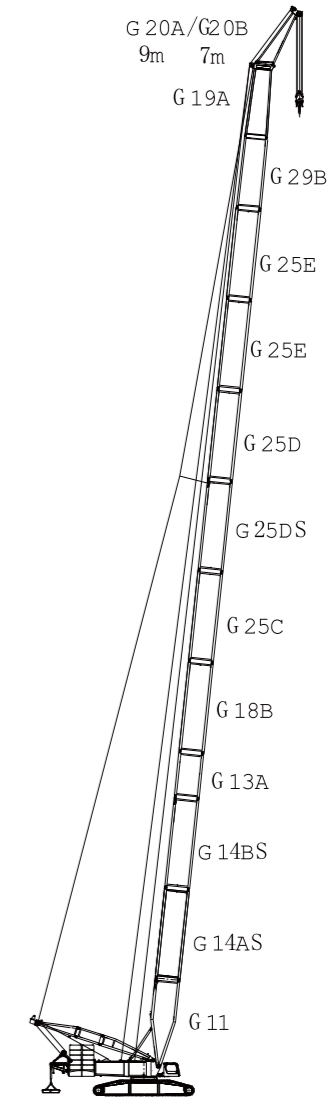
2.3 Lifting performance of operating mode SLHs9A / SLHs9 / SLHs7A / SLHs7

Code	G14BS	G13A	G25C	G25D	G25DS	G25E	G23A
Length	12m	6m	12m	12m	12m	12m	3m
60m	0	1	0	0	0	0	0
63m	0	1	0	0	0	0	1
66m	1	0	0	0	0	0	0
69m	1	0	0	0	0	0	1
72m	1	1	0	0	0	0	0
75m	1	1	0	0	0	0	1
78m	1	0	1	0	0	0	0
81m	1	0	1	0	0	0	1
84m	1	1	1	0	0	0	0
87m	1	1	1	0	0	0	1
90m	1	0	1	0	1	0	0
93m	1	0	1	0	1	0	1
96m	1	1	1	0	1	0	0
99m	1	1	1	0	1	0	1
102m	1	0	1	1	1	0	0
105m	1	0	1	1	1	0	1
108m	1	1	1	1	1	0	0
111m	1	1	1	1	1	0	1
114m	1	0	1	1	1	1	0
117m	1	0	1	1	1	1	1
120m	1	1	1	1	1	1	0
123m	1	1	1	1	1	1	1
126m	1	0	1	1	1	2	0
129m	1	0	1	1	1	2	1
132m	1	1	1	1	1	2	0

Attention:

Main boom pivot section (G11-11.5m), 12m strengthened intermediate section A for intermediate tensioner (G14AS-12m), 12m light main boom reducing section B (G18B-12m), 9.5m luffing jib reducing section B (G29B-9.5m), special boom head section for wind turbine (G19A-9m) and jib for wind turbine (G20A-9m) / (G20B-7m) are not indicated in the above table.

Main hook: —
Unit: m



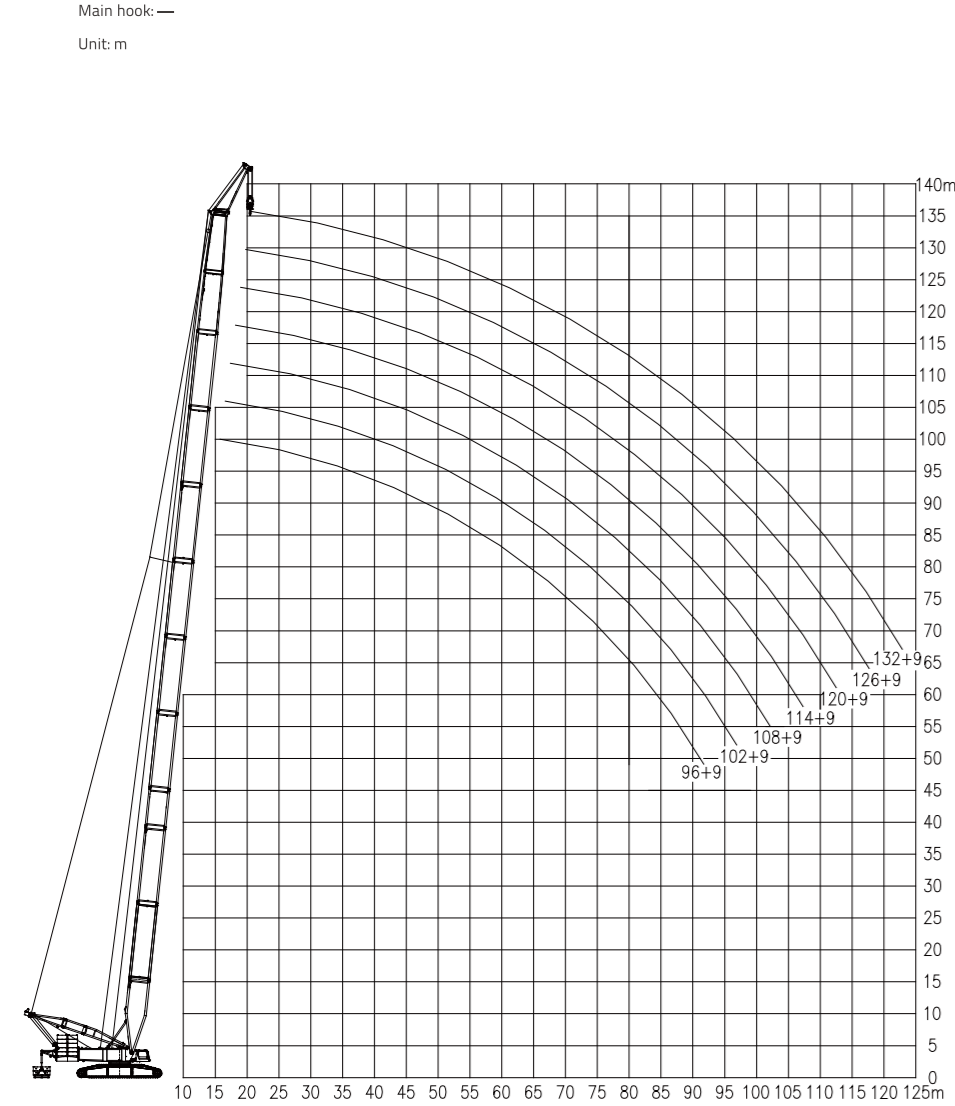
Boom combination of operating mode SLHs9A / SLHs9 / SLHs7A / SLHs7 SL=60m-132m, Hs=9m/7m

WORKING RADIUS AND LIFTING CAPACITY CHARTS

Lifting capacity chart of operating mode SLHs9A

Main boom length: 96-132m Rear counterweight: 250t Attached counterweight: 107t Central ballast: 96t

Radius (m)	Main boom length (m)+ jib for wind turbine (9m)												
	96	99	102	105	108	111	114	117	120	123	126	129	132
17	280	280	280										
18	280	280	280	280	280	280							
19	280	280	280	280	280	280	265	257	256				
20	277	278	279	280	280	277	261	255	253	246	228	220	220
22	272	273	274	275	269	263	250	249	246	239	222	215	215
24	254	254	254	252	249	246	245	241	235	229	217	210	209
26	231	229	229	229	229	226	225	222	220	217	212	204	205
28	208	208	207	207	206	206	206	205	203	201	200	197	195
30	189	188	188	187	187	186	187	186	185	185	186	183	180
32	172	171	171	171	170	169	170	169	168	168	169	168	167
34	158	157	157	156	156	155	156	155	154	154	154	153	153
36	145	144	145	144	143	142	143	142	141	141	141	141	140
38	134	133	134	133	132	131	132	131	130	130	130	129	129
40	124	124	124	123	122	121	122	121	120	120	120	120	119
44	108	107	107	106	105	105	105	105	104	103	104	103	102
48	94.8	93.9	94	93.2	92.3	91.6	92.2	91.3	90.5	89.7	90.2	89.3	88.7
52	83.7	82.8	82.9	82	81.1	80.2	81.1	80	79.3	78.4	79	78.2	77.3
56	74.2	73.4	73.4	72.5	71.6	70.8	71.6	70.6	69.7	68.9	69.4	68.5	67.6
60	66.2	65.3	65.4	64.5	63.5	62.7	63.4	62.4	61.6	60.7	61.2	60.4	59.5
64	59.2	58.3	58.4	57.5	56.5	55.7	56.4	55.4	54.6	53.7	54.2	53.3	52.4
68	53.1	52.2	52.2	51.4	50.4	49.6	50.3	49.3	48.4	47.6	48.1	47.1	46.3
72	47.7	46.9	46.8	45.9	45	44.1	44.9	43.9	43	42.1	42.7	41.7	40.8
76	42.9	42	42.1	41.2	40.1	39.3	40.1	39.1	38.1	37.2	37.8	36.9	36
80	38.6	37.7	37.8	36.8	35.8	35	35.7	34.7	33.9	32.9	33.4	32.6	31.6
84	34.7	33.8	33.9	33	32	31.1	31.8	30.8	30	29	29.6	28.6	27.7
88	31.2	30.3	30.4	29.4	28.5	27.6	28.3	27.3	26.4	25.5	26.1	25.1	24.3
92	27.9	27	27.1	26.2	25.2	24.4	25.1	24.2	23.2	22.3	22.9	21.9	21.1
96		24.1	24.2	23.3	22.2	21.5	22.2	21.2	20.3	19.3	20	19	18.1
100				20.5	19.6	18.7	19.5	18.5	17.6	16.6	17.3	16.3	15.4



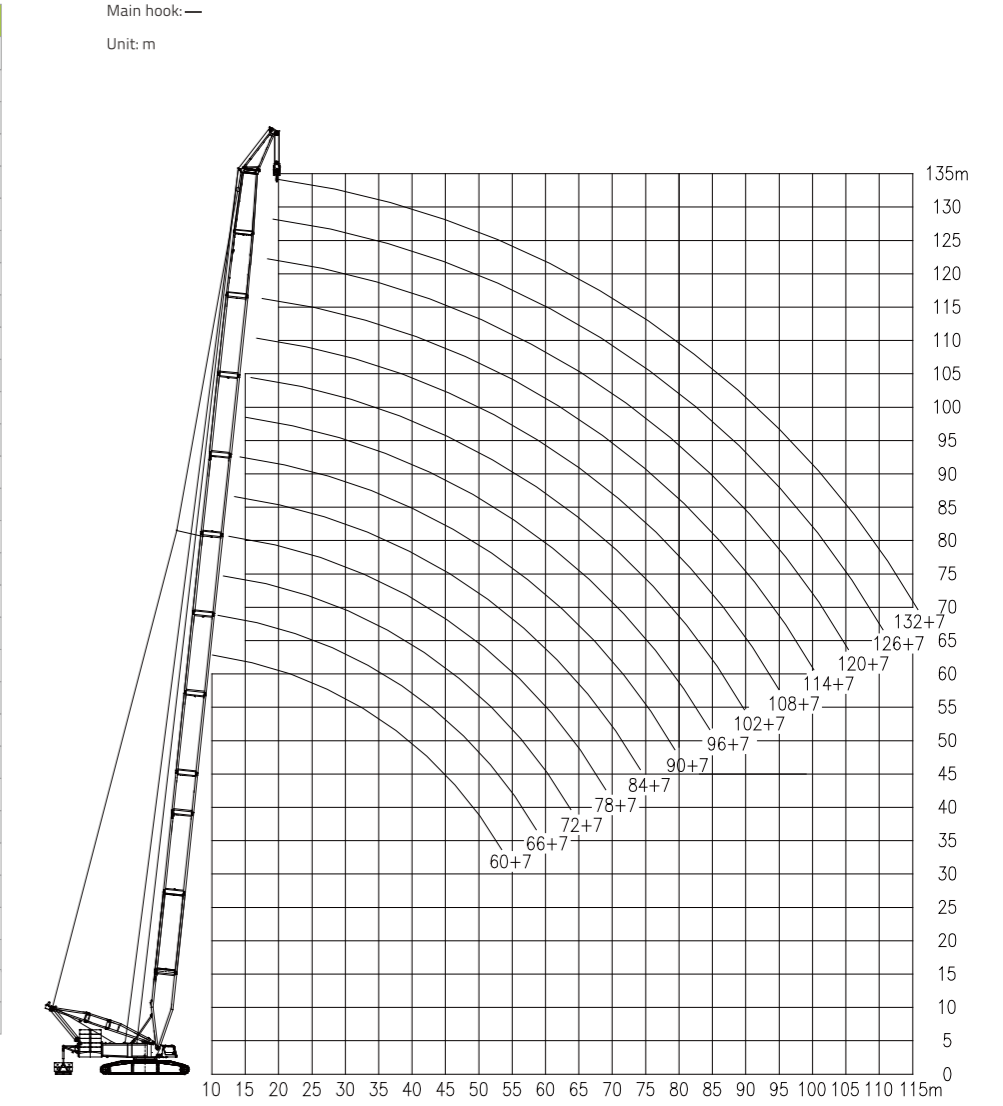
Hoisting height characteristic curves of operating mode SLHs9A SL=96-132, Hs=9m

WORKING RADIUS AND LIFTING CAPACITY CHARTS

Lifting capacity chart of operating mode SLHs9

Main boom length: 96-111m Rear counterweight: 250t Central ballast: 96t

Radius (m)	Main boom length (m)+ jib for wind turbine (9m)					
	96	99	102	105	108	111
17	248	244	241			
18	234	230	228	224	221	218
19	221	218	216	212	209	206
20	209	207	204	201	198	195
22	189	186	184	182	179	177
24	172	169	167	165	162	160
26	157	154	153	151	148	146
28	144	142	140	138	136	134
30	132	130	129	127	125	123
32	122	120	119	117	115	114
34	111	110	111	109	107	105
36	102	101	101	100	99.2	97.5
38	93.6	92.8	93	92.1	91.4	90.6
40	86.2	85.4	85.4	84.8	83.8	83.2
44	73.7	72.9	72.9	72.2	71.2	70.5
48	63.5	62.6	62.7	61.9	61	60.3
52	55	54.1	54.2	53.3	52.4	51.6
56	47.8	47	47	46.1	45.2	44.4
60	41.7	40.8	40.9	40	39	38.2
64	36.4	35.5	35.6	34.7	33.7	32.9
68	31.7	30.8	30.9	30	29	28.2
72	27.6	26.8	26.7	25.8	24.9	24
76	23.9	23	23.1	22.2	21.2	20.4
80	20.6	19.8	19.8	18.9	17.9	17.1
84	17.6	16.8	16.8	16	14.9	14
88	15	14.1	14.1	13.2	12.2	11.4
92	12.4	11.6	11.7	10.7	9.7	8.9
96		9.3	9.4	8.5	7.5	6.7
100				6.4	5.4	



Hoisting height characteristic curves of operating mode SLHs9A SL=96-132, Hs=7m

WORKING RADIUS AND LIFTING CAPACITY CHARTS

Lifting capacity chart of operating mode SLHs7A

Main boom length: 96-132m Rear counterweight: 250t Attached counterweight: 107t Central ballast: 96t													
Radius (m)	Main boom length (m) + jib for wind turbine (7m)												
	60	63	66	69	72	75	78	81	84	87	90	93	
13	330	330	330	330									
14	330	330	330	330	330	330	330						
15	329	330	330	330	330	330	330	330	330	330			
16	325	327	329	330	330	330	330	330	330	330	330	330	330
17	320	322	324	326	328	330	330	330	330	330	330	330	330
18	316	318	320	322	324	326	328	329	330	330	330	330	330
19	312	314	316	319	321	323	324	326	327	328	327	324	
20	308	310	312	315	316	316	316	316	311	311	310	307	
22	289	289	286	286	286	284	284	282	282	281	280	277	
24	262	259	259	259	259	256	256	256	255	255	255	252	
26	235	235	235	234	233	233	233	232	232	231	232	231	
28	213	212	212	211	210	210	210	209	209	208	209	208	
30	194	193	193	192	191	191	191	190	189	189	189	189	
32	177	177	176	176	175	174	174	174	173	172	173	172	
34	163	163	162	162	161	160	160	160	159	158	159	158	
36	151	151	150	149	148	148	148	147	146	146	146	146	
38	140	140	139	139	138	137	137	136	135	135	135	135	
40	131	130	130	129	128	127	128	127	126	125	126	125	
44	115	114	113	113	112	111	111	110	109	109	109	109	
48	102	101	100	99.9	98.7	98.1	98.2	97.4	96.4	95.6	96.3	95.5	
52	90.8	90.2	89.6	88.8	87.7	87.1	87.2	86.3	85.3	84.5	85.2	84.4	
56	81.5	80.9	80.2	79.5	78.4	77.7	77.8	77	76	75.2	75.9	75.1	
60	73.4	72.9	72.2	71.5	70.4	69.7	69.9	69	67.9	67.2	67.9	67.1	
64			65.3	64.6	63.5	62.8	62.9	62.1	61	60.2	61	60.1	
68				58.5	57.4	56.7	56.8	56	54.9	54.1	54.9	54	
72						51.3	51.4	50.7	49.6	48.8	49.5	48.7	
76							46.6	45.8	44.8	43.9	44.7	43.9	
80								40.4	39.7	40.5	39.6		
84									35.7	36.6	35.7		
88												32.2	

Lifting capacity chart of operating mode SLHs7A

Main boom length: 96-132m Rear counterweight: 250t Attached counterweight: 107t Central ballast: 96t														
Radius (m)	Main boom length (m)+ jib for wind turbine (7m)													
	96	99	102	105	108	111	114	117	120	123	126	129	132	
16	330	330												
17	330	330	328	317	308									
18	330	330	324	313	303	293	287	275						
19	320	317	314	306	288	288	283	270	264	255	240	230		
20	303	300	298	296	280	282	276	266	261	252	238	227	225	
22	274	271	270	267	255	262	261	253	250	244	232	222	220	
24	250	247	246	243	233	238	237	232	233	230	227	216	214	
26	229	226	225	223	213	218	218	212	213	211	211	208	206	
28	207	207	207	205	196	201	201	196	196	194	194	192	190	
30	188	187	187	187	180	185	186	181	182	180	179	178	175	
32	171	171	171	170	163	169	169	166	168	167	167	165	163	
34	157	156	157	156	150	154	155	152	153	153	153	153	152	
36	145	144	144	143	137	142	142	140	141	140	141	140	139	
38	134	133	133	132	127	131	131	129	130	129	130	129	128	
40	124	123	123	122	118	121	122	119	120	120	120	119	118	
44	108	107	107	106	102	104	105	103	103	103	103	103	102	
48	94.5	93.7	93.7	92.9	88.9	91.1	91.9	89.7	90.1	89.3	89.9	89	88.2	
52	83.4	82.5	82.7	81.8	78.1	80	80.7	78.6	79	78.1	78.6	77.8	77	
56	74.1	73.1	73.2	72.4	69.1	70.6	71.3	69.5	69.5	68.6	69.1	68.3	67.5	
60	66	65.2	65.2	64.3	61.3	62.5	63.2	61.5	61.4	60.5	61	60.2	59.4	
64	59	58.2	58.2	57.3	54.5	55.5	56.2	54.5	54.4	53.5	54.1	53.1	52.3	
68	53	52.1	52.2	51.2	48.6	49.4	50.1	48.6	48.3	47.4	47.9	47	46.2	
72	47.6	46.7	46.8	45.9	43.4	44	44.8	43.2	42.8	42	42.6	41.6	40.8	
76	42.8	41.9	42	41.1	38.8	39.2	39.9	38.4	38	37.1	37.7	36.8	35.9	
80	38.6	37.7	37.7	36.8	34.6	34.9	35.6	34.3	33.8	32.9	33.4	32.5	31.6	
84	34.7	33.8	33.8	32.9	30.8	31.1	31.8	30.4	29.9	29	29.5	28.6	27.7	
88	31.1	30.3	30.4	29.5	27.4	27.6	28.3	27	26.4	25.5	26.1	25.1	24.2	
92	27.9	27.1	27.1	26.2	24.4	24.3	25.1	23.8	23.2	22.2	22.9	21.9	21	
96			24.2	23.3	21.6	21.4	22.2	21	20.3	19.3	19.9	19	18	
100				20.6	18.9	18.7	19.5	18.3	17.6	16.7	17.2	16.3	15.4	
104						16.2	17	15.9	15.1	14.2	14.8	13.9	12.9	
108									13.6	12.8	11.9	12.5	11.5	10.6
112									10.6	9.7	10.4	9.4	8.5	
116										8.3	7.4	6.5		
120											5.6			

WORKING RADIUS AND LIFTING CAPACITY CHARTS

Lifting capacity chart of operating mode SLHs7

Main boom length: 60-111m Rear counterweight: 250t Central ballast: 96t													
Radius (m)	Main boom length (m) + jib for wind turbine (7m)												
	60	63	66	69	72	75	78	81	84	87	90	93	
13	330	330	330	330									
14	330	330	330	330	330	330	330						
15	329	330	330	324	319	314	309	304	299	294			
16	318	312	308	303	298	293	289	284	280	276	273	269	
17	297	292	288	284	279	275	271	267	263	259	256	252	
18	279	275	271	267	263	258	256	251	247	244	241	238	
19	263	259	255	251	247	244	241	237	233	230	228	225	
20	248	245	241	238	234	231	228	225	221	218	216	213	
22	218	217	217	214	210	207	205	202	199	196	195	192	
24	192	192	191	191	190	188	186	184	181	178	177	175	
26	171	171	170	170	169	169	169	168	165	162	162	159	
28	154	154	153	153	152	151	152	151	150	149	148	146	
30	140	139	139	138	137	137	137	136	135	135	136	134	
32	128	127	126	126	125	124	125	124	123	122	123	122	
34	117	116	116	115	114	114	114	113	112	112	112	112	
36	108	107	107	106	105	104	105	104	103	102	103	102	
38	99.9	99.3	98.7	98.1	97	96.4	96.6	95.8	94.8	94.1	94.8	94	
40	92.7	92.1	91.5	90.8	89.8	89.2	89.3	88.5	87.5	86.8	87.5	86.7	
44	80.5	79.9	79.2	78.5	77.5	76.8	77	76.1	75.2	74.4	75.1	74.3	
48	70.5	69.9	69.2	68.6	67.4	66.8	66.9	66.1	65.1	64.3	65	64.2	
52	62.2	61.6	60.9	60.2	59.1	58.4	58.5	57.7	56.7	55.9	56.6	55.8	
56	55.1	54.5	53.8	53.1	52	51.3	51.4	50.7	49.6	48.8	49.5	48.7	
60	49	48.4	47.8	47	45.9	45.3	45.4	44.5	43.4	42.7	43.4	42.6	
64			42.5	41.8	40.7	40	40.1	39.3	38.2	37.4	38.1	37.3	
68				37.1	36	35.4	35.5	34.7	33.5	32.8	33.5	32.6	
72						31.2	31.4	30.6	29.5	28.7	29.4	28.6	
76							27.7	26.9	25.8	25	25.8	24.9	
80									22.5	21.7	22.5	21.6	
84										18.7	19.5	18.7	
88												16	

Lifting capacity chart of operating mode SLHs7

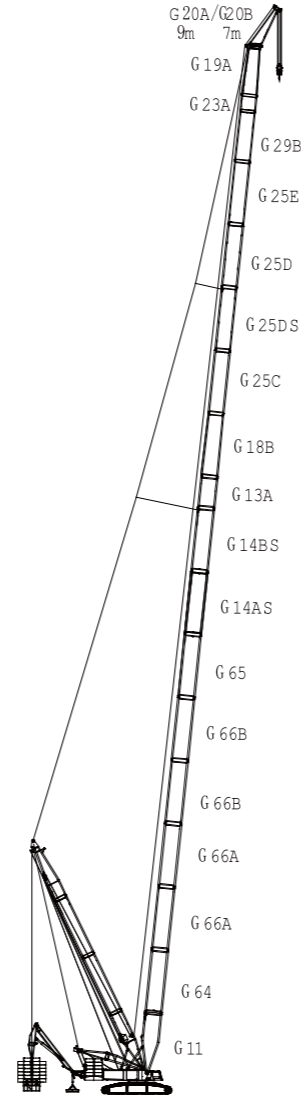
Main boom length: 96-111m Rear counterweight: 250t Central ballast: 96t						
Radius (m)	Main boom length (m) + jib for wind turbine (7m)					
	96	99	102	105	108	111
16	264	260				
17	249	245	241	238	234	
18	234	231	228	224	221	218
19	221	218	216	212	209	206
20	210	207	204	201	198	195
22	189	186	184	182	179	176
24	172	169	168	165	163	160
26	157	154	153	151	148	146
28	144	141	140	138	136	134
30	132	130	129	127	125	123
32	122	120	119	117	115	113

WORKING RADIUS AND LIFTING CAPACITY CHARTS

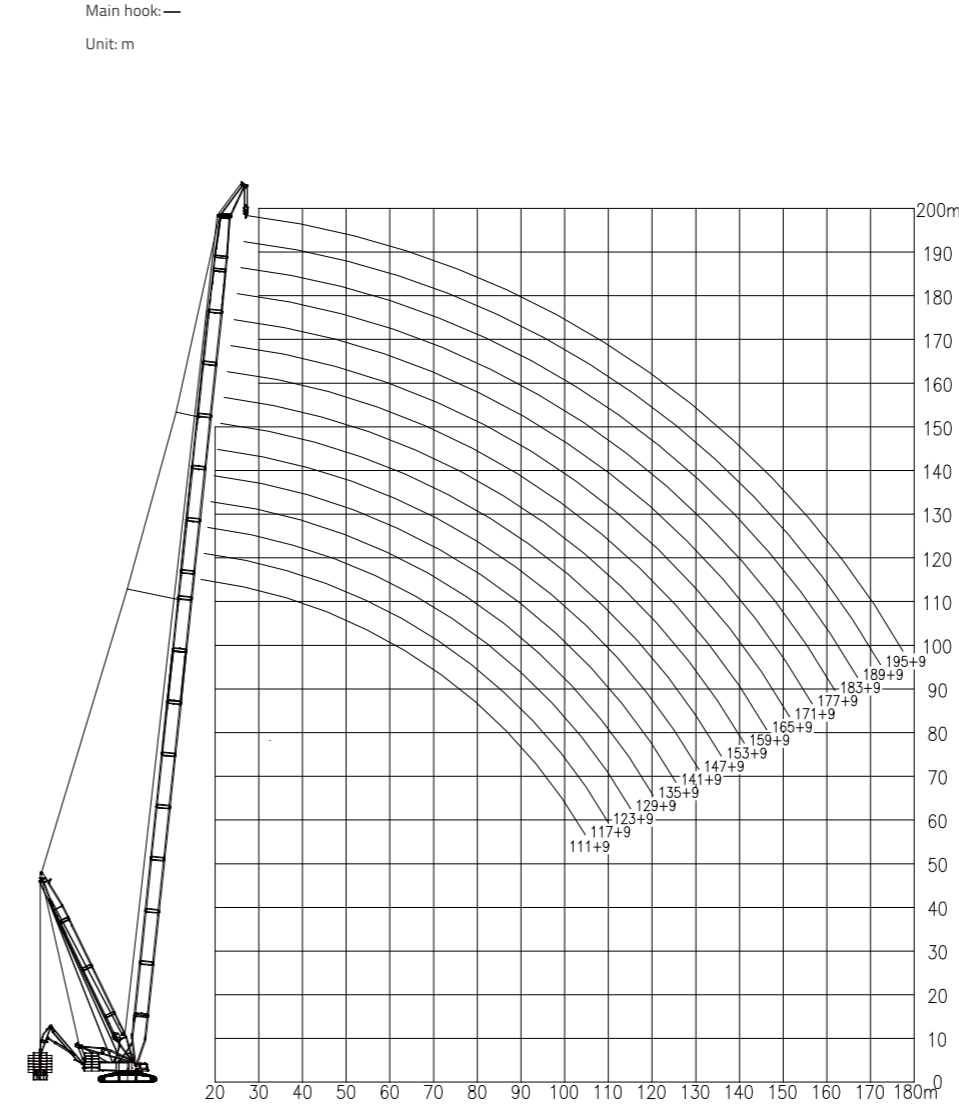
2.4 Lifting performance of operating mode SLHs9DBA / SLHs9DB / SLHs7DBA / SLHs7DB

Code	G66A	G66B	G14AS	G13A	G25C	G25D	G25DS	G25DE	G23A
Length	12m	12m	12m	6m	12m	12m	12m	12m	3m
108m	1	1	0	1	0	0	0	0	0
111m	1	1	0	1	0	0	0	0	1
114m	1	2	0	0	0	0	0	0	0
117m	1	2	0	0	0	0	0	0	1
120m	1	2	0	1	0	0	0	0	0
123m	1	2	0	1	0	0	0	0	1
126m	1	2	1	0	0	0	0	0	0
129m	1	2	1	0	0	0	0	0	1
132m	1	2	1	1	0	0	0	0	0
135m	1	2	1	1	0	0	0	0	1
138m	2	2	1	0	0	0	0	0	0
141m	2	2	1	0	0	0	0	0	1
144m	2	2	1	1	0	0	0	0	0
147m	2	2	1	1	0	0	0	0	1
150m	2	2	1	0	1	0	0	0	0
153m	2	2	1	0	1	0	0	0	1
156m	2	2	1	1	1	0	0	0	0
159m	2	2	1	1	1	0	0	0	1
162m	2	2	1	0	1	0	1	0	0
165m	2	2	1	0	1	0	1	0	1
168m	2	2	1	1	1	0	1	0	0
171m	2	2	1	1	1	0	1	0	1
174m	2	2	1	0	1	1	1	0	0
177m	2	2	1	0	1	1	1	0	1
180m	2	2	1	1	1	1	1	0	0
183m	2	2	1	1	1	1	1	0	1
186m	2	2	1	0	1	1	1	1	0
189m	2	2	1	0	1	1	1	1	1
192m	2	2	1	1	1	1	1	1	0
195m	2	2	1	1	1	1	1	1	1

Attention: Main boom pivot section (G11-11.5m), 12m ultrawide reducing section A (G64-12m), 12m ultrawide intermediate section A (G66A-12m), 12m strengthened intermediate section for intermediate tensioner (G14BS-12m), 12m light main boom reducing section B (G18B-12m), 9.5m luffing jib reducing section B (G29B-9.5m), special boom head A for wind turbine (G19A-9m) and jib for wind turbine (G20A-9m) / (G20B-7m) are not indicated in the above table.



Boom combination of operating mode SLHs9DBA / SLHs9DB / SLHs7DBA / SLHs7DB (with attached counterweight) (SL=108m-195m, Hs=9m/7m)



Hoisting height characteristic curves of operating mode SLHs9DBA / SLHs9DB (SL=108m-195m, Hs=9m)

WORKING RADIUS AND LIFTING CAPACITY CHARTS

Lifting capacity chart of operating mode SLHs9DBA

Main boom length: 108-195m Rear counterweight: 250t Central ballast: 96t Suspended ballast: 500t															
Attached counterweight: 0t Radius of suspended ballast: 29m															
Radius (m)	Main boom length (m)+ jib for wind turbine (9m)														
	108	111	114	117	120	123	126	129	132	135	138	141	144	147	150
18	280														
19	280	280	280	280											
20	280	280	280	280	280	280	280	280							
22	276	277	278	279	280	280	280	280	280	280	280	280	280	280	
24	271	272	273	274	275	276	277	278	279	280	280	280	280	280	280
26	267	268	269	270	271	272	273	274	275	276	277	277	278	279	280
28	262	263	265	266	267	268	269	270	271	272	273	274	274	275	276
30	258	259	260	262	263	264	265	266	267	268	269	270	271	272	272
32	254	255	256	258	259	260	261	262	263	264	265	266	267	268	269
34	250	251	253	254	255	256	257	259	260	261	262	263	264	265	265
36	246	248	249	250	252	253	254	255	256	257	258	259	260	261	262
38	243	244	245	247	248	249	251	252	253	254	255	256	257	258	259
40	239	241	242	244	245	246	247	249	250	251	252	253	254	255	256
44	233	234	236	237	239	240	241	242	244	245	246	247	248	249	250
48	227	229	230	232	233	234	236	237	238	239	241	242	243	244	245
52	222	223	225	226	228	229	230	232	233	234	235	237	238	239	240
56	217	219	220	222	223	224	226	227	228	229	231	232	233	234	235
60	213	214	216	217	219	220	221	222	224	225	226	227	229	230	231
64	209	210	212	213	214	216	217	218	220	221	222	223	222	221	222
68	205	207	208	209	211	212	213	213	211	210	208	206	205	205	205
72	202	203	203	203	201	200	198	198	197	196	192	192	191	190	190
76	193	192	190	189	188	187	185	185	183	182	180	179	177	176	176
80	180	180	178	177	176	175	173	173	171	171	168	167	165	165	165
84	169	168	166	165	164	163	162	161	160	159	156	156	154	153	154
88	158	157	155	155	153	153	151	150	149	149	146	145	144	143	144
92	149	148	146	145	144	143	141	141	140	139	136	135	134	133	134
96	140	139	137	136	135	134	133	132	131	130	127	127	125	125	125
100	132	131	129	128	127	126	125	124	123	122	119	119	117	117	117
104	124	124	122	121	120	119	117	117	115	115	112	111	110	109	110
108			115	114	113	112	110	110	108	108	105	104	103	102	103

WORKING RADIUS AND LIFTING CAPACITY CHARTS

Lifting capacity chart of operating mode SLHs9DBA (continued)

Main boom length: 108-195m Rear counterweight: 250t Central ballast: 96t Suspended ballast: 500t Attached counterweight: 0t Radius of suspended ballast: 29m															
Radius (m)	Main boom length (m)+ jib for wind turbine (9m)														
	153	156	159	162	165	168	171	174	177	180	183	186	189	192	195
24	280	280	280	277	267	260									
26	280	280	280	274	264	260	245	235	230	220	210	205			
28	277	277	278	274	264	257	242	235	230	220	210	204	200	195	185
30	273	274	275	270	260	257	242	232	228	220	210	199	198	192	185
32	270	271	271	270	260	257	242	232	228	219	210	196	196	188	182
34	266	267	268	268	258	254	242	228	226	219	208	192	194	185	182
36	263	264	265	265	254	254	242	228	225	217	208	189	192	182	180
38	260	261	262	262	254	252	242	225	222	215	208	185	190	182	178
40	257	258	259	259	251	249	242	222	220	212	206	183	188	180	176
44	251	252	253	254	245	235	242	220	216	212	206	176	182	180	176
48	246	247	248	248	235	223	239	218	212	209	196	169	174	180	176
52	241	242	243	237	222	211	234	212	203	201	190	163	167	177	170
56	236	237	238	226	210	200	229	203	195	190	181	156	157	168	161
60	232	233	233	214	200	188	223	193	184	182	174	149	149	160	153
64	221	220	219	204	191	179	217	183	177	173	165	144	141	152	146
68	204	203	202	194	181	171	201	176	169	167	159	139	134	146	139
72	190	188	188	186	173	163	186	169	162	159	151	133	129	139	132
76	176	175	174	175	165	156	173	162	155	152	145	128	122	132	127
80	165	163	162	163	159	150	161	156	149	147	138	124	116	127	120
84	153	152	151	152	151	144	149	150	144	141	134	119	111	121	116
88	143	142	141	142	141	138	139	140	138	136	128	115	106	116	111
92	133	132	131	132	131	130	130	131	130	129	124	111	102	111	107
96	125	123	123	123	123	121	121	122	121	120	119	108	97.9	107	102
100	116	115	114	115	114	113	113	114	113	112	111	105	93.9	103	98.2
104	109	108	107	108	107	106	105	107	106	105	104	101	90.3	99	94
108	102	101	100	101	100	99.1	98.5	99.7	99	97.6	96.9	97.8	87.2	95.8	90.8

Lifting capacity chart of operating mode SLHs9DB

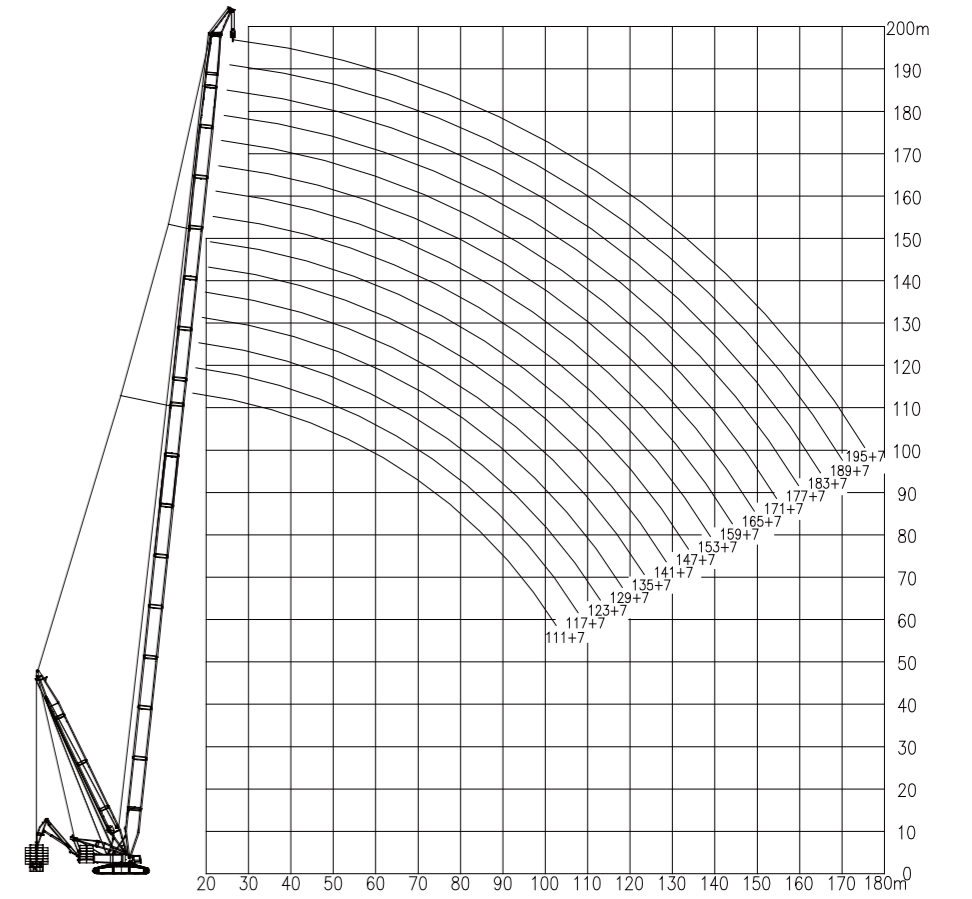
Main boom length: 108-189m Rear counterweight: 250t Central ballast: 96t Suspended ballast: 500t Radius of suspended ballast: 27m																
Radius (m)	Main boom length (m)+ jib for wind turbine (9m)															
	108	111	114	117	120	123	126	129	132	135	138	141	144	147	150	
18	280															
19	280	280	280	280												
20	280	280	280	280	280	280	280	280								
22	276	277	278	279	280	280	280	280	280	280	280	280	280	280		
24	271	272	273	274	275	276	277	278	279	280	280	280	280	280	280	
26	267	268	269	270	271	272	273	274	275	276	277	277	278	279	280	
28	262	263	265	266	267	268	269	270	271	272	273	274	274	275	276	
30	258	259	260	262	263	264	265	266	267	268	269	270	271	272	272	
32	254	255	256	258	259	260	261	262	263	264	265	266	267	268	269	
34	250	251	253	254	255	256	257	259	260	261	262	263	264	265	265	
36	246	248	249	250	252	253	254	255	256	257	258	259	260	261	262	
38	243	244	245	247	248	249	251	252	253	254	255	256	257	258	259	
40	239	241	242	244	245	246	247	249	250	251	252	253	254	255	256	
44	233	234	236	237	239	240	241	242	244	245	246	247	248	249	250	
48	227	229	230	232	233	234	236	237	238	239	241	242	243	244	245	
52	222	223	225	226	228	229	230	232	233	234	235	237	238	239	240	
56	217	219	220	222	223	224	226	227	228	229	231	232	233	234	235	
60	213	214	216	217	219	220	221	222	224	225	226	227	225	225	225	
64	209	210	212	213	214	216	215	215	213	209	209	208	206	206	207	
68	205	206	204	203	202	202	199	199	197	197	193	193	192	191	192	
72	193	192	190	190	188	188	186	185	183	182	180	179	178	176	177	
76	180	180	178	176	175	175	173	172	171	171	167	167	165	165	165	
80	169	168	166	165	164	163	162	161	159	159	156	155	153	153	153	
84	159	158	156	155	153	153	151	151	149	149	145	145	143	143	143	
88	149	149	147	146	145	144	142	142	140	139	136	136	134	133	134	
92	140	139	137	137	135	135	133	132	131	130	127	127	125	125	125	
96	132	131	129	128	127	126	125	124	123	122	119	119	117	117	117	
100	124	123	121	121	119	119	117	116	115	114	111	111	109	109	109	
104	117	116	114	114	112	112	110	109	108	107	104	104	102	102	102	
108			108	107	106	105	103	103	101	101	98	97.4	96	95.5	95.9	

WORKING RADIUS AND LIFTING CAPACITY CHARTS

Lifting capacity chart of operating mode SLHs9DB (continued)

Main boom length: 108-189m Rear counterweight: 250t Central ballast: 96t Suspended ballast: 500t Radius of suspended ballast: 27m															
Radius (m)	Main boom length (m)+ jib for wind turbine (9m)														
	153	156	159	162	165	168	171	174	177	180	183	186	189		
24	280	280	280	277	267	260									
26	280	280	280	274	264	260	245	235	230	220	210	205			
28	277	277	278	274	264	257	242	235	230	220	210	204	200		
30	273	274	275	270	260	257	242	232	228	220	210	199	198		
32	270	271	271	270	260	257	242	232	228	219	210	196	196		
34	266	267	268	268	258	254	242	228	226	219	208	192	194		
36	263	264	265	265	254	254	242	228	225	217	208	189	192		
38	260	261	262	262	254	252	242	225	222	215	208	185	190		
40	257	258	259	259	251	249	242	222	220	212	206	183	188		
44	251	252	253	254	245	235	242	220	216	212	206	176	182		
48	246	247	248	248	235	223	239	218	212	209	196	169	174		
52	241	242	243	237	222	211	234	212	203	201	190	163	167		
56	236	237	238	226	210	200	229	203	195	190	181	156	157		
60	224	223	222	214	200	188	220	193	184	182	174	149	149		
64	206	205	204	204	191	179	202	183	177	173	165	144	141		
68	191	189	188	189	181	171	186	176	169	167	159	139	134		
72	176	175	174	175	173	163	172	169	162	159	151	133	129		
76	164	162	162	162	162	156	159	161	155	152	145	128	122		
80	153	151	151	151	151	149	148	150	149	147	138	124	116		
84	142	141	140	141	140	139	138	139	139	137	134	119	111		
88	133	132	131	132	131	130	129	130	129	128	127	115	106		
92	125	123	122	123	122	121	120	121	121	119	119	111	102		
96	116	115	114	115	114	113	113	114	113	112	110	108	97.9		
100	109	107	107	107	107	105	105	106	105	104	103	105	93.9		
104	102	100	99.9	100	99.9	98.5	97.9	99.2	98.4	97.1	96.3	97.8	90.3		
108	95.3	93.9	93.3	94.1	93.3	92	91.4	92.6	91.8	90.5	89.7	91.2	87.2		

Main hook: —
Unit: m



Hoisting height characteristic curves of operating mode SLHs7A (SL=96-132, Hs=7m)

WORKING RADIUS AND LIFTING CAPACITY CHARTS

Lifting capacity chart of operating mode SLHs7DBA

Main boom length: 108-195m Rear counterweight: 250t Central ballast: 96t Suspended ballast: 500t Attached counterweight: 0t Radius of suspended ballast: 29m															
Radius (m)	Main boom length (m)+ jib for wind turbine (7m)														
	108	111	114	117	120	123	126	129	132	135	138	141	144	147	150
18	330	330	330	330											
19	330	330	330	330	330	330	330								
20	330	330	330	330	330	330	330	330	330	330					
22	329	330	330	330	330	330	330	330	330	330	330	330	330	330	330
24	324	325	326	327	329	330	330	330	330	330	326	330	328	330	330
26	319	320	321	323	324	325	326	327	328	329	330	321	330	324	330
28	314	315	317	318	319	320	322	323	324	325	326	314	328	319	330
30	309	311	312	313	315	316	317	318	319	321	322	310	324	317	326
32	305	306	308	309	310	312	313	314	315	317	318	303	320	312	322
34	301	302	304	305	306	308	309	310	312	313	314	300	316	308	318
36	297	298	300	301	303	304	305	307	308	307	310	296	312	301	315
38	293	294	296	297	299	300	302	303	304	304	307	292	309	298	311
40	289	291	292	294	295	297	298	299	301	300	303	285	306	294	308
44	282	284	285	287	288	290	291	293	294	289	297	278	299	287	301
48	276	278	279	281	282	284	285	287	288	282	289	265	293	278	296
52	270	272	273	275	277	278	280	281	282	275	282	261	286	271	286
56	265	267	268	270	271	271	269	269	268	266	263	251	262	261	262
60	256	255	253	252	251	250	247	247	246	245	242	242	240	240	239
64	237	236	233	233	232	231	229	228	227	226	224	223	221	221	221
68	220	219	218	217	215	215	212	212	211	210	207	207	205	204	205
72	205	205	203	202	201	200	198	198	196	195	192	192	190	190	190
76	192	191	190	189	187	187	185	184	183	182	179	179	177	177	177
80	181	180	178	177	176	175	173	172	171	170	167	167	165	165	165
84	170	169	167	166	165	164	162	162	160	159	157	156	154	154	154
88	160	159	157	157	155	154	152	151	150	150	147	146	144	144	144
92	151	150	148	147	146	145	143	143	141	141	137	137	135	134	135
96	143	142	140	139	138	137	135	134	133	132	129	129	127	127	127
100	135	134	132	132	130	129	127	127	125	125	121	121	120	119	119
104		127	125	124	123	122	120	120	118	118	114	114	113	112	112
108				117	116	115	114	113	112	111	108	108	106	105	106

Lifting capacity chart of operating mode SLHs7DBA (continued)

Main boom length: 108-195m Rear counterweight: 250t Central ballast: 96t Suspended ballast: 500t Attached counterweight: 0t Radius of suspended ballast: 29m																		
Radius (m)	Main boom length (m)+ jib for wind turbine (7m)																	
	153	156	159	162	165	168	171	174	177	180	183	186	189	192	195			
24	330																	
26	330	323	310	290	274	265	252	245										
28	330	323	310	290	274	265	252	245	232	220	212	205	200	192				
30	326	318	307	290	274	265	252	245	232	220	212	202	198	192	185			
32	326	318	307	290	274	265	252	245	232	219	211	201	196	188	185			
34	321	318	304	290	274	265	252	245	231	218	210	200	194	185	182			
36	319	316	303	290	274	265	252	244	230	217	210	199	192	182	182			
38	316	316	300	289	274	265	252	243	228	216	209	198	190	182	180			
40	312	311	297	286	273	265	252	242	227	215	208	197	189	180	178			
44	309	307	293	284	270	258	248	241	226	214	206	196	188	178	176			
48	303	304	286	270	255	242	243	239	220	212	202	187	180	176	174			
52	297	297	277	256	240	228	236	230	212	205	194	176	170	174	171			
56	285	283	263	243	226	217	232	219	200	195	185	168	160	169	163			
60	261	259	249	229	215	206	228	208	191	185	174	159	152	159	154			
64	240	238	237	218	204	194	216	199	182	177	167	151	143	152	146			
68	221	219	219	208	192	184	204	190	174	170	159	143	136	144	138			
72	204	202	202	197	184	175	194	180	166	162	152	136	129	138	133			
76	189	188	187	188	176	166	185	172	158	154	146	130	123	130	126			
80	176	175	174	175	167	159	172	165	152	149	140	123	117	124	121			
84	165	163	162	163	160	152	160	158	145	141	133	118	113	118	115			
88	153	152	151	152	151	145	149	150	140	137	129	112	106	114	110			
92	143	142	141	142	141	140	139	140	134	132	122	108	102	110	105			
96	135	133	132	133	132	131	130	131	129	127	118	103	97.6	105	101			
100	127	125	124	125	124	123	122	123	123	121	114	99.2	94.1	101	96.4			
104	119	117	117	117	116	115	115	116	115	113	110	94.7	90.2	96.8	92.8			
108	112	110	110	110	109	108	108	109	108	106	106	92	86.7	93.4	88.8			

WORKING RADIUS AND LIFTING CAPACITY CHARTS

Lifting capacity chart of operating mode SLHs7DB

Main boom length: 108-189m Rear counterweight: 250t Central ballast: 96t Suspended ballast: 500t Radius of suspended ballast: 27m															
Radius (m)	Main boom length (m)+ jib for wind turbine (7m)														
	108	111	114	117	120	123	126	129	132	135	138	141	144	147	150
18	330	330	330	330											
19	330	330	330	330	330	330	330								
20	330	330	330	330	330	330	330	330	330	330	330				
22	329	330	330	330	330	330	330	330	330	330	330	330	330	330	330
24	324	325	326	327	329	330	330	330	330	330	326	330	328	330	330
26	319	320	321	323	324	325	326	327	328	329	330	321	330	324	330
28	314	315	317	318	319	320	322	323	324	325	326	314	328	319	330
30	309	311	312	313	315	316	317	318	319	321	322	310	324	317	326
32	305	306	308	309	310	312	313	314	315	317	318	303	320	312	322
34	301	302	304	305	306	308	309	310	312	313	314	300	316	308	318
36	297	298	300	301	303	304	305	307	308	307	310	296	312	301	315
38	293	294	296	297	299	300	302	303	304	304	307	292	309	298	311
40	289	291	292	294	295	297	298	299	301	300	303	285	306	294	308
44	282	284	285	287	288	290	291	293	294	289	297	278	299	287	301
48	276	278	279	281	282	284	285	287	288	282	289	265	293	278	295
52	270	272	273	275	277	278	276	275	274	273	270	261	268	268	268
56	261	260	258	256	256	255	253	252	251	250	246	246	245	244	245
60	240	239	237	236	235	234	232	232	231	230	226	226	225	224	225
64	222	222	219	219	218	217	215	214	212	212	209	208	206	206	206
68	206	206	204	203	202	201	199	198	197	197	193	192	191	191	191
72	192	192	190	189	188	187	185	185	183	183	179	178	178	177	177
76	180	180	178	177	176	175	173	172	171	170	167	166	164	164	164
80	169	169	166	165	164	164	162	161	159	158	156	155	153	153	153
84	158	158	156	155	154	153	151	150	149	149	145	144	143	143	143
88	150	149	146	146	144	144	141	141	140	139	136	135	134	133	134
92	141	140	138	137	135	135	133	132	131	130	127	127	125	125	125
96	133	132	130	129	128	127	125	125	123	122	120	119	117	117	117
100	126	125	123	122	120	120	118	117	116	115	112	112	110	110	110
104		118	116	115	114	113	111	111	109	108	106	105	104	103	103
108				109	108	107	105	105	103	103	100	99	97.9	96.9	97.3

Lifting capacity chart of operating mode SLHs7DB (continued)

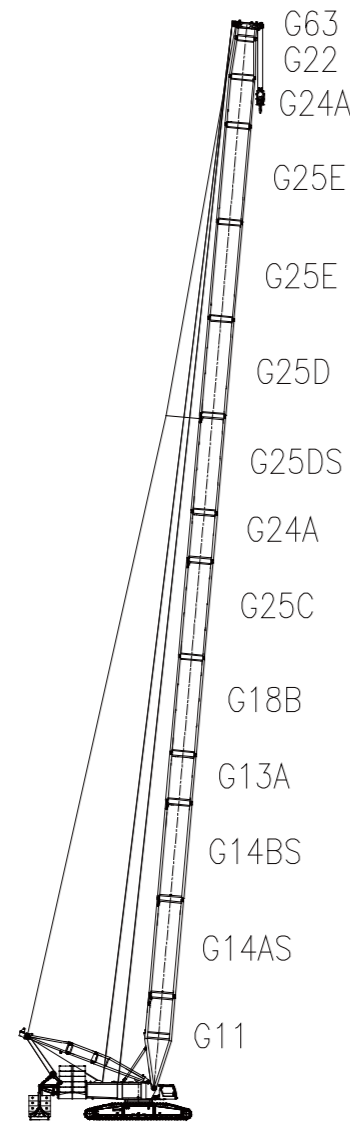
Main boom length: 108-189m Rear counterweight: 250t Central ballast: 96t Suspended ballast: 500t Radius of suspended ballast: 27m																	
Radius (

WORKING RADIUS AND LIFTING CAPACITY CHARTS

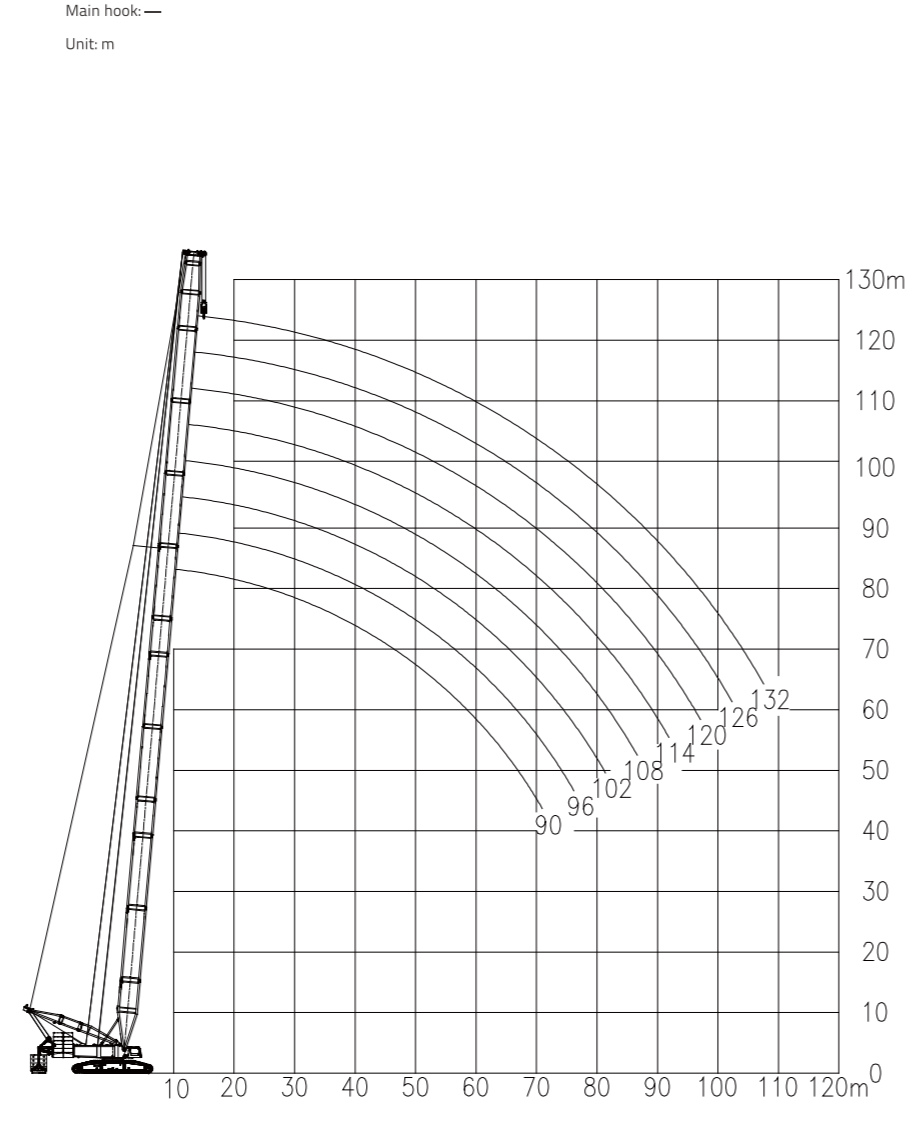
2.5 Lifting performance of operating mode SLA

Code	G13A	G25C	G24A	G25DS	G25D	G25E
Length	6m	12m	6m	12m	12m	12m
90m	0	1	0	1	0	1
96m	1	1	0	1	0	1
102m	0	1	0	1	1	1
108m	1	1	0	1	1	1
114m		1		1	1	2
120m	1	1		1	1	2
126m	1	1	1	1	1	2
132m	1	1	2	1	1	2

Attention:
Main boom pivot section (G11-11.5m), 12m strengthened intermediate section A for intermediate tensioner (G14AS-12m), 12m strengthened intermediate section B for intermediate tensioner (G14BS-12m), 12m light main boom reducing section B (G18B-12m), luffing jib head section (4.8 - 9m) and luffing jib head adaptor (G63-1.7m) are not indicated in the above tables.



Boom combination of operating mode SLA SL=90-132m



Hoisting height characteristic curves of operating mode SLA (S=90m-132m)

WORKING RADIUS AND LIFTING CAPACITY CHARTS

Lifting capacity chart of operating mode SLA

Main boom: 96-132m Rear counterweight: 250t, Attached counterweight: 0t (Unit: t)								
Radius (m)	Main boom length (m)							
	90	96	102	108	114	120	126	132
14	316	305	297	286				
16	275	266	259	251	244	236	229	
18	243	235	230	222	217	210	203	196
20	216	209	205	198	194	187	182	176
22	194	188	184	178	175	169	164	158
24	176	170	167	161	158	153	148	143
26	159	155	152	146	144	139	134	130
28	146	141	138	134	131	126	123	118
30	131	129	127	122	120	116	112	108
32	118	117	117	113	110	107	103	99
34	108	106	106	104	102	98.4	94.9	91
36	98.4	96.7	96.8	95.1	94.3	90.7	87.5	83.9
38	90.1	88.4	88.5	86.8	86.9	83.8	80.6	77.2
40	82.8	81	81.1	79.3	79.4	77.6	74.6	70.8
44	70.4	68.6	68.7	66.7	66.9	65.2	63.5	60.2
48	60.3	58.4	58.5	56.5	56.6	54.8	53.4	51.4
52	51.8	49.9	50	48	48.2	46.3	44.8	43
56	44.7	42.8	42.8	40.9	40.9	39.1	37.5	35.7
60	38.7	36.7	36.7	34.7	34.8	32.9	31.4	29.6
64	33.3	31.4	31.4	29.5	29.4	27.5	26	24.3
68	28.7	26.8	26.7	24.8	24.8	22.9	21.4	19.6
72	24.6	22.6	22.7	20.7	20.7	18.8	17.3	15.3
76	20.9	19	19	17.1	17.1	15.2	13.5	11.7
80	17.6	15.7	15.7	13.8	13.8	11.9	10.3	8.4
84		12.7	12.7	10.8	10.8	8.9	7.3	5.5
88			10.1	8.1	8.1	6.2		
92				5.6	5.7			

Main boom: 96-132m Rear counterweight: 250t, Attached counterweight: 57t (Unit: t)

Main boom: 96-132m Rear counterweight: 250t, Attached counterweight: 0t (Unit: t)								
Radius (m)	Main boom length (m)							
	90	96	102	108	114	120	126	132
14	379	367	356	344				
16	331	320	313	303	295	286	277	
18	293	284	277	269	263	255	247	240
20	262	254	248	241	236	229	223	215
22	236	229	224	217	213	207	201	195
24	214	208	204	198	194	188	183	178
26	195	190	186	180	177	172	167	162
28	177	174	171	165	163	157	153	148
30	160	158	157	152	150	145	141	136
32	145	143	144	141	138	134	130	126
34	132	131	131	129	128	124	120	116
36	121	120	120	118	118	115	112	108
38	112	110	110	108	108	107	104	100
40	103	101	101	99.8	99.9	98.2	96.9	92.9
44	88.8	87	87.1	85.1	85.3	83.6	82	80.3
48	77	75.1	75.2	73.2	73.3	71.5	70	68.3
52	67.1	65.2	65.2	63.3	63.4	61.5	60	58.2
56	58.8	56.9	56.9	54.9	55	53.1	51.6	49.8
60	51.7	49.8	49.7	47.8	47.8	45.9	44.4	42.6
64	45.5	43.6	43.5	41.6	41.6	39.7	38.2	36.4
68	40.1	38.1	38.1	36.1	36.2	34.3	32.7	31
72	35.3	33.3	33.4	31.4	31.4	29.5	28	26
76	31	29.1	29.1	27.2	27.2	25.3	23.6	21.8
80	27.1	25.2	25.3	23.3	23.3	21.4	19.9	17.9
84		21.7	21.8	19.9	19.9	17.9	16.4	14.6
88			18.7	16.7	16.8	14.8	13.3	11.4
92				13.9	13.9	12	10.4	8.6
96					11.2	11.3	9.4	7.8
100						8.9	7	5.4

WORKING RADIUS AND LIFTING CAPACITY CHARTS

Main boom: 96-132m Rear counterweight: 250t, Attached counterweight: 107t (Unit: t)

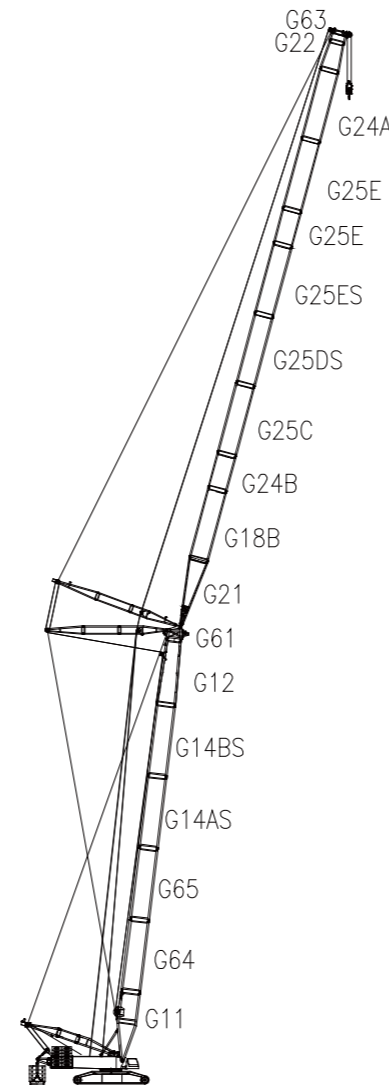
Main boom: 96-132m Rear counterweight: 250t, Attached counterweight: 107t (Unit: t)								
Radius (m)	Main boom length (m)							
	90	96	102	108	114	120	126	132
14	434	414	391	367				
16	380	368	359	346	328	308	290	
18	337	327	320	310	303	294	278	261
20	302	293	287	279	273	265	258	251
22	272	265	260	253	247	240	234	228
24	247	241	236	230	226	219	214	208
26	226	221	217	211	206	201	196	190
28	204	203	199	194	190	185	180	175
30	185	183	183	179	176	171	167	162
32	168	167	167	165	163	158	154	149
34	154	152	152	151	151	147	143	139
36	142	140	140	138	138	137	134	129
38	131	129	129	127	127	126	125	121
40	121	119	119	117	118	116	115	112
44	105	103	103	101	101	99.7	98.1	96.4
48	91.6	89.7	89.8	87.8	87.9	86.1	84.7	83
52	80.5	78.6	78.6	76.7	76.8	74.9	73.4	71.6
56	71.1	69.2	69.2	67.3	67.3	65.5	63.9	62.1
60	63.1	61.2	61.2	59.2	59.3	57.3	55.9	54
64	56.1	54.2	54.2	52.3	52.3	50.4	48.8	47.1
68	50	48.1	48.1	46.1	46.2	44.3	42.7	40.9
72	44.7	42.7	42.7	40.8	40.8	38.9	37.4	35.4
76	39.9	37.9	37.9	36	36	34.1	32.5	30.7
80	35.5	33.6	33.7	31.7	31.7	29.8	28.3	26.3
84		29.7	29.8	27.8	27.9	25.9	24.4	22.5
88			26.3	24.3	24.4	22.4	20.9	19
92				21.1	21.1	19.2	17.7	15.8
96				18.1	18.2	16.3	14.7	12.9
100					15.5	13.6	12	10.2
104						11.1	9.6	7.7
108							7.3	5.4

2.6 Lifting performance of operating mode SWA

Code	G64	G65	G14A	G13A	G14BS
Length	12m	12m	12m	6m	12m
42m	0	0	1	1	0
48m	0	0	1	0	1
54m	0	0	1	1	1
60m	1	1	0	0	1
66m	1	1	0	1	1

Code	G24B	G25C	G25DS	G25ES	G25E	G24A
Length	12m	12m	12m	12m	12m	12m
30m	0	0	0	0	0	0
36m	1	0	0	0	0	0
42m	0	0	0	0	1	0
48m	1	0	0	0	1	0
54m	0	0	0	0	2	0
60m	1	0	0	0	2	0
66m	0	0	0	1	2	0
72m	1	0	0	1	2	0
78m	0	1	0	1	2	0
84m	1	1	0	1	2	1
90m	1	1	1	1	2	1
96m	1	1	1	1	2	2
102m	1	1	1	1	2	2

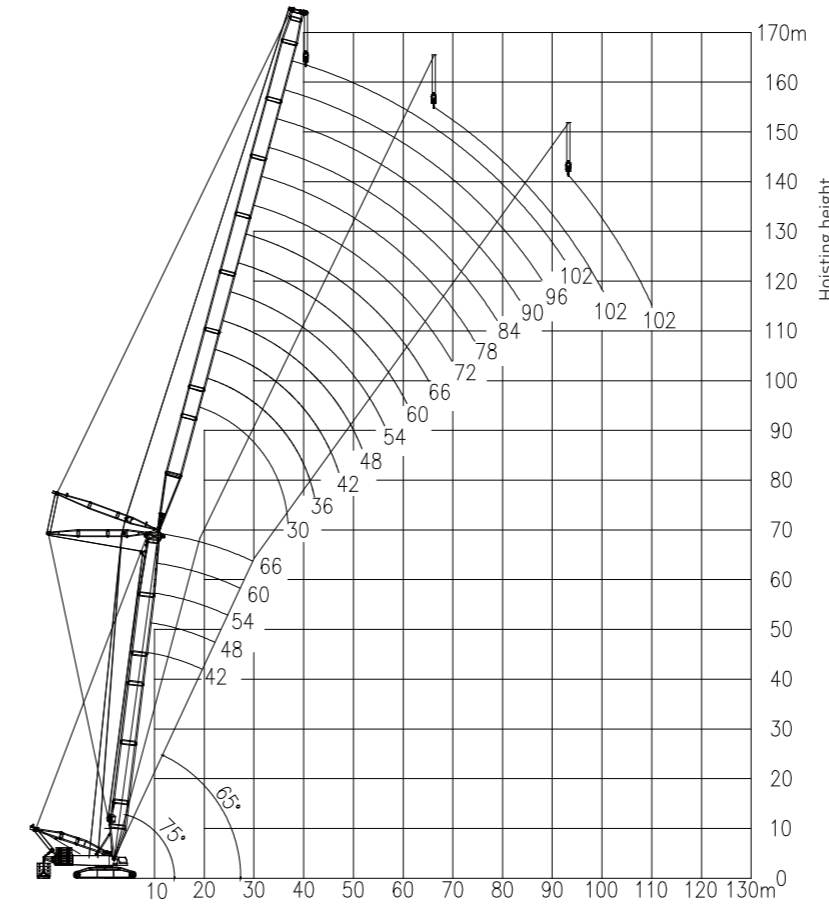
Attention:
Main boom pivot section (G11-11.5m), main boom head section (G12-11.3m), main boom head adaptor (G61-1.2m), luffing jib pivot section (G21-11.5m), 12m light main boom reducing section B (G18B-12m), luffing jib head section (G22-4.8m) and luffing jib head adaptor (G63-1.7m) are not indicated in the above tables.



Boom combination of operating mode SWA
(S=42m-60m W=30m-102m) (S=66m W=30m-72m)

WORKING RADIUS AND LIFTING CAPACITY CHARTS

Main hook: —
Unit: m



Hoisting height characteristic curves of operating mode SWA(S=42m-60m, W=30m-102m) (S=66m, W=30m-72m)

Lifting capacity chart of operating mode SWA (85°)

Main boom: 54m Rear counterweight: 250t Central ballast: 96t Attached counterweight: 107t (Unit: t)																	
Radius (m)	Jib length (m)																
	30	36	42	48	54	60	66	72	78	84	90	96	102				
18	359	357															
20	322	320	320														
22	292	290	290	287													
24	267	265	265	262	259	251											
26	245	243	243	241	239	232	227										
28	226	224	224	222	220	215	210	205									
30	209	206	206	205	203	200	195	191	186								
32	191	190	191	189	188	186	182	178	174	170	165						
34	176	175	176	175	173	172	171	167	163	159	155	150					
36	162	162	163	162	161	159	158	157	153	149	145	141	137				
38		150	151	150	149	147	147	146	144	140	137	132	128				
40		140	141	140	139	137	137	136	135	132	129	125	121				
44			124	123	122	120	120	119	118	116	115	111	107				
48				109	108	106	106	105	104	102	101	99.7	96.4				
52					96.8	96.6	95	94.5	93.6	92.4	91.2	89.8	88.1	86.4			
56						86.5	85.2	84.7	83.8	82.6	81.4	80.1	78.3	76.6			
60							76.6	76.3	75.3	74.2	73	71.7	70	68.2			
64								69	68.9	68	66.9	65.7	64.4	62.7	61		
68									62.3	61.5	60.5	59.4	58.1	56.4	54.7		
72										55.7	54.8	53.7	52.5	50.8	49		
76											50.4	49.7	48.7	47.4	45.8	44.1	
80												45	44.1	42.9	41.3	39.6	
84													39.9	38.8	37.2	35.5	
88														36	35	33.5	31.9
92															31.5	30.1	28.5
96																26.9	25.4
100																	22.5

WORKING RADIUS AND LIFTING CAPACITY CHARTS

Lifting capacity chart of operating mode SWA (85°)

Main boom: 54m Rear counterweight: 250t Central ballast: 96t Attached counterweight: 107t (Unit: t)																
Radius (m)	Jib length (m)															
	30	36	42	48	54	60	66	72	78	84	90	96	102			
18	357															
20	320	317	317													
22	290	287	287	281												
24	265	262	262	258	252											
26	243	241	241	238	232	225	220									
28	224	222	222	220	215	209	204	199								
30	206	205	205	203	200	194	190	186	181							
32	191	190	190	189	187	181	178	173	169	165						
34	176	175	176	174	173	170	167	163	158	154	150	146				
36	162	162	163	161	160	158	157	153	149	145	141	137	133			
38		150	151	150	149	147	146	144	140	137	133	129	125			
40		140	141	140	139	137	136	136	132	129	125	121	117			
44			124	123	122	120	119	119	117	115	112	108	104			
48			109	109	108	106	106	105	103	102	100	97.1	93.6			
52				96.8	96.5	94.9	94.3	93.3	92.1	90.9	89.5	87.5	84.1			
56					86.5	85	84.6	83.6	82.3	81.1	79.8	78	75.9			
60						76.5	76.1	75.2	74	72.8	71.4	69.7	67.9			
64						68.9	68.8	67.8	66.7	65.5	64.2	62.5	60.7			
68							62.2	61.4	60.3	59.2	57.9	56.1	54.4			
72								55.6	54.6	53.5	52.3	50.5	48.8			
76									50.3	49.5	48.5	47.3	45.6	43.8		
80										44.9	44	42.8	41.1	39.4		
84											39.8	38.7	37	35.4		
88												35.9	34.9	33.3	31.7	
92													31.4	29.9	28.3	
96														26.8	25.2	
100															23.7	22.4

Lifting capacity chart of operating mode SWA (85°)

Main boom: 54m Rear counterweight: 250t Central ballast: 96t Attached counterweight: 107t (Unit: t)																	
Radius (m)	Jib length (m)																
	30	36	42	48	54	60	66	72	78	84	90	96	102				
18	353																
20	317	315															
22	287	285	281	273													
24	263	260	258	250	244												
26	241	239	238	231	225	219											
28	222	220	220	214	209	203	198										
30	205	203	203	200	195	189	185	180	176								
32	191	189	189	186	182	177	173	169	164	160							
34	176	175	175	174	171	166	162	158	154	150	146						
36	162	162	162	161	160	156	152	149	145	141	137	133	129				
38		150	151	150	149	147	144	140	136	133	129	125	121				
40		140	141	140	139	137	136	132	129	125	122	118	114				
44			124	123	122	120	119	118	115	112	109	105	101				
48			109	108	108	106	105	104	103	101	97.8	94.2	90.7				
52				96.7	96.3	94.7	94.1	93.1	91.8	90.6	88.3	84.8	81.5				
56					86.4	84.8	84.3	83.3	82.1	80.8	79.5	76.7	73.5				
60						76.9	76.4	76	74.9	73.7	72.5	71.1	69.4	66.4			
64							68.8	68.6	67.6	66.5	65.3	63.9	62.2	60.1			
68								62.1	61.2	60.1	58.9	57.6	55.9	54.1			
72									55.5	54.5	53.3	52	50.3	48.5			
76										50.2	49.4	48.3	47	45.3	43.6		
80											44.7	43.8	42.6	40.9	39.1		
84												39.6	38.5	36.8	35.1		
88													35.8	34.7	33.1	31.5	
92														31.3	29.8	28.1	
96															26.6	25.1	
100																23.6	22.2

WORKING RADIUS AND LIFTING CAPACITY CHARTS

Lifting capacity chart of operating mode SWA (85°)

Main boom: 60m Rear counterweight: 250t Central ballast: 96t Attached counterweight: 107t (Unit: t)																	
Radius (m)	Jib length (m)																
	30	36	42	48	54	60	66	72	78	84	90	96	102				
18	349																
20	314	305															
22	284	278	272														
24	260	255	250	243	237												
26	239	235	231	224	219	212											
28	220	218	214	208	203	197	193										
30	203	201	200	194	189	183	180	175									
32	189	187	187	181	177	172	168	164	159	155							
34	176	174	174	170	166	161	157	153	149	145	141						
36	162	162	162	160	156	151	148	144	140	137	133	128					
38		150	151	150	147	143	140	136	132	129	125	121	117				
40		140	141	139	138	135	132	128	125	121	118	114	110				
44			123	122	121	120	118	115	112	109	105	101	98.1				
48			109	108	108	106	105	104	101	98	94.8	91.2	87.7				
52				96.6	96.2	94.5	93.9	92.8	91.4	88.6	85.6	82.1	78.8				
56					86.3	84.7	84.2	83.1	81.8	80.4	77.5	74.2	71				
60						76.7	76.2	75.8	74.7	73.5	72.3	70.4	67.2	64.1			
64							68.7	68.5	67.5	66.3	65.1	63.7	61	57.9			
68								62	61	59.9	58.7	57.4	55.5	52.5			
72									55.5	55.3	54.3	53.1	51.8	50	47.5		
76										50.1	49.2	48.1	46.8	45.1	43.1		
80											44.6	43.6	42.4	40.6	38.9		
84												39.5	38.3	36.6	34.9		
88													35.6	34.6	33	31.3	
92														31.1	29.6	28	
96															26.5	24.9	
100																23.5	22

Lifting capacity chart of operating mode SWA (85°)

Main boom: 66m Rear counterweight: 250t Central ballast: 96t Attached counterweight: 107t (Unit: t)										
Radius (m)	Jib length (m)									
	30	36	42	48	54	60	66	72		
20	304	295								
22	277	269	263							
24	255	247	242	235						
26	235	228	224	217	212					
28	218	212	208	202	197	191	187			
30	202	197	194	188	184	178	174	170		
32	187	185	181	176	172	167	163	159		
34	174	173	170	165	161	156	153	149		
36	162	161	160	156	152	147	144	140		
38	141	150	150	147	143	139	136	132		
40		140	140	139	136	131	128	125		
44			123	122	121	118	115	112		
48			109	108	107	105	104	101		
52				96.4	95.9	94.1	93.5	91.6		
56					86	84.4	83.8	82.7		
60						74.7	75.9	75.5	74.4	
64							68.5	68.2	67.1	
68								61.7	60.7	
72									54	55.1
76										49.9

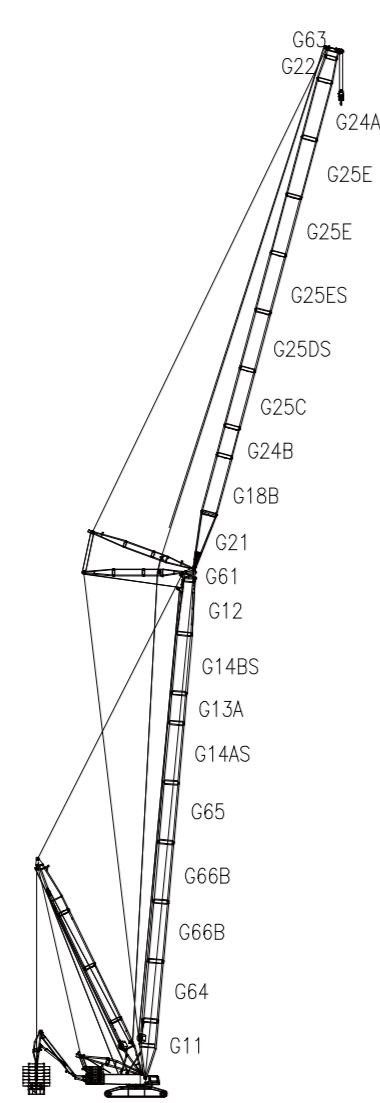
WORKING RADIUS AND LIFTING CAPACITY CHARTS

2.7 Lifting performance of operating mode SWDBA

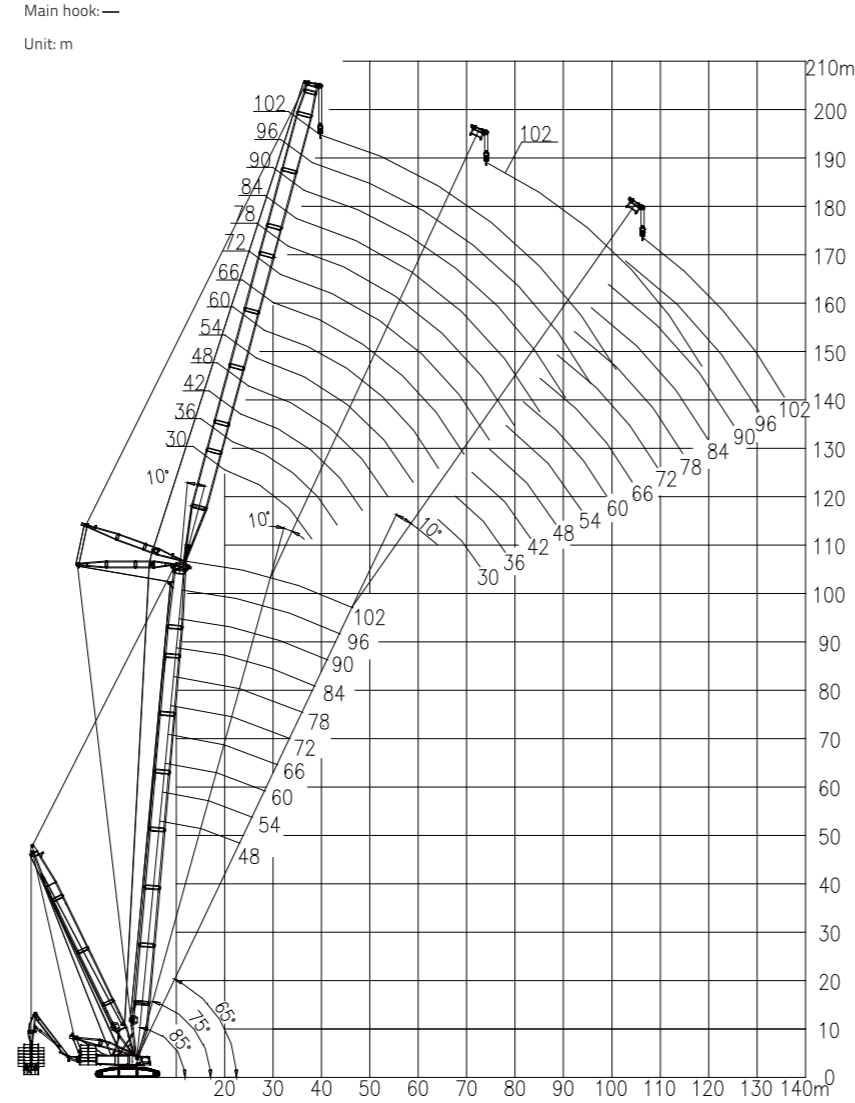
Code	G64	G66A	G66B	G65	G14AS	G14BS	G13A
Length	12m	12m	12m	12m	12m	12m	6m
48m	0	0	0	0	1	1	0
54m	0	0	0	0	1	1	1
60m	1	0	0	1	0	1	0
66m	1	0	0	1	0	1	1
72m	1	0	0	1	1	1	0
78m	1	0	0	1	1	1	1
84m	1	0	1	1	1	1	0
90m	1	0	1	1	1	1	1
96m	1	0	2	1	1	1	0
102m	1	0	2	1	1	1	1

Code	G24B	G25C	G25DS	G25ES	G25E	G24A
Length	12m	12m	12m	12m	12m	12m
30m	0	0	0	0	0	0
36m	1	0	0	0	0	0
42m	0	0	0	0	1	0
48m	1	0	0	0	1	0
54m	0	0	0	0	2	0
60m	1	0	0	0	2	0
66m	0	0	0	1	2	0
72m	1	0	0	1	2	0
78m	0	1	0	1	2	0
84m	1	1	0	1	2	1
90m	1	1	1	1	2	1
96m	1	1	1	1	2	2
102m	1	1	1	1	2	2

Attention:
Main boom pivot section (G11-11.5m), main boom head section (G12-11.3m), main boom head adaptor (G61-1.2m), luffing jib pivot section (G21-11.5m), 12m light main boom reducing section B (G18B-12m), luffing jib head section (G22-4.8m) and luffing jib head adaptor (G63-1.7m) are not indicated in the above tables.



Boom combination of operating mode SWDBA
(S=48m-102m W=30m-102m)



Hoisting height characteristic curves of operating mode SWDBA (S=48m-102m, W=30m-102m)

WORKING AND LIFTING CAPACITY CHARTS

Lifting capacity chart of operating mode SWDBA (85°)

Radius (m)	Main boom: 48m Suspended ballast: 500t Radius of suspended ballast: 29m Rear counterweight: 250t Central ballast: 96t Attached counterweight: 0t (Unit: t)														
	Jib length (m)														
	30	36	42	48	54	60	66	72	78	84	90	96	102		
18	650														
20	650	591	537												
22	639	586	522	468											
24	563	568	507	457	415										
26	503	513	493	445	406	373	338								
28	452	461	461	432	395	365	335	295							
30	400	418	418	417	386	357	328	293	256						
32	350	380	382	381	375	349	321	290	254	225					
34	302	342	352	351	350	340	314	288	251	223	196	170			
36		314	325	324	324	321	307	283	249	221	194	169	150		
38		282	298	301	302	299	297	278	246	219	191	168	149		
40		240	273	281	280	277	277	272	245	216	189	165	148		
44			230	242	240	239	243	242	238	211	184	160	144		
48				206	207	207	212	215	213	208	179	156	139		
52				166	170	175	185	193	191	190	174	151	134		
56					135	145	160	174	173	172	165	148	130		
60						118	135	155	157	156	154	140	124		
64							92.2	112	139	141	143	131	116		
68								90.3	123	127	129	121	109		
72									103	113	117	111	98.8		
76									81.8	97.5	104	106	98.8	91.3	
80										79.8	92	95.9	90	83.8	
84											76.6	85.8	81.3	75	
88												72.5	70	67.5	
92													59	67.7	56.3
96														55.9	62.8
100															52.2

Lifting capacity chart of operating mode SWA (85°)

Radius (m)	Main boom: 66m Rear counterweight: 250t Central ballast: 96t Attached counterweight: 107t (Unit: t)																
	Jib length (m)																
	30	36	42	48	54	60	66	72	78	84	90	96	102				
18	643																
20	638	581															
22	637	576	513	460													
24	581	562	500	449	403												
26	517	533	487	439	399	358											
28	460	479	474	428	390	355	314										
30	405	428	439	418	381	352	311	273	243								
32	357	384	397	403	372	345	306	270	241	211							
34		346	361	367	361	337	301	268	239	210	189						
36		311	328	336	331	326	295	265	236	206	186	168	185				
38		280	300	309	305	300	289	263	233	204	184	165	146				
40		253	274	285	281	278	281	259	231	201	180	163	144				
44			232	242	240	238	243	249	224	196	175	158	139				
48				206	206	206	211	222	216	193	170	151	134				
52					175	176	178	184	196	197	185	164	144	129			
56						148	153	161	174	175	175	159	138	119			
60							131	140	155	157	159	151	131	109			
64								102	121	138	140	143	140	123	97.5		
68									100	122	126	129	129	115	92.5		
72										107	112	115	117	105	87.5		
76											90.8	99.3	103	105	97.5	82.5	
80												85.9	91.3	93.8	87.5	73.8	
84													80.4	81.3	76.3	67.5	
88														68.2	74.6	65	57.5
92															64.4	68.3	48.8
96																59.5	62.2
100																	54.5

WORKING RADIUS AND LIFTING CAPACITY CHARTS

Lifting capacity chart of operating mode SWDBA (85°)

Main boom: 60m Suspended ballast: 500t Radius of suspended ballast: 29m Rear counterweight: 250t Central ballast: 96t Attached counterweight: 0t (Unit: t)													
Radius (m)	Jib length (m)												
	30	36	42	48	54	60	66	72	78	84	90	96	102
18	604												
20	604	563											
22	604	563	518										
24	596	563	506	446	400								
26	532	538	494	434	394	341							
28	477	493	475	433	394	333	303						
30	422	443	445	416	383	325	299	268					
32	372	397	409	398	368	323	293	264	236	210			
34	320	357	371	378	353	315	291	258	231	206	181		
36	268	322	338	346	338	305	286	253	228	204	179	158	
38		290	309	317	312	289	276	251	224	200	176	154	135
40		263	278	274	284	256	258	240	215	193	171	149	129
44			218	231	246	225	234	225	210	190	165	145	124
48			193	194	211	198	210	206	198	181	161	139	123
52				181	180	170	184	186	183	173	153	130	115
56					153	143	163	169	170	163	141	124	105
60						135	140	149	154	148	133	119	98.8
64						110	120	130	138	135	125	114	93.8
68							106	113	121	121	120	109	88.8
72								110	104	105	109	100	86.3
76								94	102	91.3	93.8	91.3	82.5
80									88.5	77.5	78.8	81.3	77.5
84										82.7	68.8	70	71.3
88										70.7	76.6	60	61.3
92											66.5	70.1	53.8
96												61.4	45
100													52
104													56.1

Lifting capacity chart of operating mode SWDBA (85°)

Main boom: 66m Suspended ballast: 500t Radius of suspended ballast: 29m Rear counterweight: 250t Central ballast: 96t Attached counterweight: 0t (Unit: t)													
Radius (m)	Jib length (m)												
	30	36	42	48	54	60	66	72	78	84	90	96	102
20	563	522											
22	563	522	469										
24	560	514	463	408									
26	548	510	450	401	360								
28	490	489	445	393	356	321	283						
30	438	458	425	393	346	316	280	251					
32	387	410	405	379	345	308	276	249	223				
34	338	369	382	361	334	306	273	245	220	196	176		
36	284	333	348	344	320	298	271	241	218	194	175	155	
38		300	318	326	309	288	265	236	215	191	174	153	130
40		272	290	300	295	278	258	235	211	189	171	151	129
44			242	255	252	250	240	224	208	186	166	149	125
48			201	218	217	216	221	208	198	179	164	148	121
52				187	186	187	193	194	184	171	156	143	119
56					158	162	169	178	171	160	148	135	113
60					129	139	148	161	158	149	139	126	104
64						116	128	143	144	139	129	119	97.5
68							110	127	130	128	120	111	92.5
72								112	116	118	110	101	87.5
76								96.8	104	105	98.8	93.8	83.8
80									91	95	90	86.3	78.8
84										84.7	82.5	77.5	75
88										73	78.4	70	71.3
92											68.4	71.7	66.3
96												63	58.8
100													53.8
104													49.7

WORKING RADIUS AND LIFTING CAPACITY CHARTS

Lifting capacity chart of operating mode SWDBA (85°)

Main boom: 72m Suspended ballast: 500t Radius of suspended ballast: 29m Rear counterweight: 250t Central ballast: 96t Attached counterweight: 0t (Unit: t)													
Radius (m)	Jib length (m)												
	30	36	42	48	54	60	66	72	78	84	90	96	102
20	522												
22	522	481	435										
24	509	468	424	378									
26	483	446	410	371	331								
28	456	423	394	361	329	296							
30	425	399	378	348	323	291	264	236					
32	395	375	360	333	311	283	258	233	204				
34	354	351	340	318	299	274	251	229	201	184			
36	300	330	323	301	285	265	246	224	199	180	161	185	
38		309	304	285	273	255	239	221	195	178	160	146	164
40		278	284	270	260	246	230	219	191	175	158	144	124
44			249	241	238	225	215	205	189	168	153	139	121
48			208	213	214	204	198	191	178	165	148	138	119
52				192	190	184	179	176	168	155	143	131	119
56					162	165	161	164	155	144	135	126	114
60						134	142	145	149	143	133	126	119
64							120	131	136	131	124	119	111
68								113	124	121	114	111	101
72								93.6	115	111	101	101	95
76									99.6	98.8	91.3	93.8	88.8
80										93.1	83.8	86.3	82.5
84										79.1	86.7	77.5	73.8
88											75.1	80.1	68.8
92												70.1	61.3
96													64.6
100													55.5
104													51.2

Lifting capacity chart of operating mode SWDBA (85°)

Main boom: 78m Suspended ballast: 500t Radius of suspended ballast: 29m Rear counterweight: 250t Central ballast: 96t Attached counterweight: 0t (Unit: t)													
Radius (m)	Jib length (m)												
	30	36	42	48	54	60	66	72	78	84	90	96	102
20	479												
22	474	440											
24	461	440	413	375									
26	444	426	399	364	323								
28	430	423	395	363	323	278							
30	403	400	381	350	310	273	246						
32	375	370	366	338	299	266	243	215	190				
34	349	346	349	324	286	266	236	211	188	170			
36	316	316	330	308	271	256	228	210	185	168	150		
38	263	295	310	291	258	246	226	209	180	165	149	135	152
40		276	288	273	246	234	219	204	176	163	146	134	118
44			246	244	221	216	203	191	174	160	143	130	115
48			215	209	198	195	184	178	164	153	140	126	111
52				197	175	174	169	163	153	143	131	124	109
56					155	155	153	148	140	131	124	118	103
60						139	138	136	135	129	123	116	110
64							123	123	121	119	114	109	100
68								116	109	109	101	98.8	92.5
72								97	96.3	96.3	93.8	91.3	86.3
76									102	87.5	85	83.8	80
80										95.3	76.3	75	72.5
84										81.6	88.5	67.5	66.3
88											77	81.7	60
92												71.8	55
96												61.2	66.1
100													57.1
104													52.5

WORKING RADIUS AND LIFTING CAPACITY CHARTS

Lifting capacity chart of operating mode SWDBA (85°)

Main boom: 84m Suspended ballast: 500t Radius of suspended ballast: 29m Rear counterweight: 250t Central ballast: 96t Attached counterweight: 0t (Unit: t)															
Radius (m)	Jib length (m)														
	30	36	42	48	54	60	66	72	78	84	90	96	102		
20	439														
22	430	401													
24	416	391	354												
26	400	374	344	313											
28	389	364	341	311	285	249									
30	364	343	326	299	276	244	283								
32	340	325	308	285	266	238	223	201							
34	316	304	293	271	256	235	216	196	176	160					
36	295	285	276	258	246	228	216	193	175	158	141				
38	278	266	260	245	234	220	209	190	173	155	139	124			
40		251	244	231	224	210	203	186	171	151	136	123	113		
44		237	214	208	203	194	189	176	168	149	131	120	110		
48			221	183	180	175	173	166	160	141	129	116	108		
52				202	159	158	156	154	146	133	124	114	103		
56				167	139	139	140	139	134	125	116	109	97.5		
60					143	123	124	125	120	115	109	100	92.5		
64						127	111	113	106	103	98.8	92.5	87.5		
68							119	98.8	96.3	95	91.3	85	82.5		
72							100	88.8	88.8	87.5	83.8	80	76.3		
76								104	110	81.3	75	73.8	71.3		
80										97.3	71.3	70	68.8	66.3	
84											83.7	90.3	65	62.5	60
88												78.9	58.8	57.5	55
92													73.5	52.5	48.8
96													63.1	67.4	43.8
100														58.5	61.5
104															53.8

Lifting capacity chart of operating mode SWDBA (85°)

Main boom: 90m Suspended ballast: 500t Radius of suspended ballast: 29m Rear counterweight: 250t Central ballast: 96t Attached counterweight: 0t (Unit: t)															
Radius (m)	Jib length (m)														
	30	36	42	48	54	60	66	72	78	84	90	96	102		
22	388	356													
24	374	349	321												
26	358	336	315	284											
28	351	331	311	288	261										
30	333	313	299	276	254	231	205								
32	313	295	283	264	246	225	200	191							
34	294	278	268	251	235	219	195	189	170						
36	274	261	253	239	225	210	194	185	168	155	166				
38	255	246	239	224	216	203	189	179	165	153	138	154			
40		230	223	213	205	195	181	174	161	148	136	124	138		
44		212	195	189	185	178	169	164	153	140	133	119	106		
48			202	168	165	163	156	151	141	133	126	114	104		
52				148	145	145	143	139	133	124	120	109	98.8		
56				159	128	129	129	126	121	116	113	103	93.8		
60					144	115	116	116	111	109	103	96.3	88.8		
64						130	103	105	101	98.8	95	91.3	83.8		
68						107	121	93.8	93.8	91.3	88.8	85	78.8		
72							103	83.8	86.3	83.8	83.8	80	72.5		
76								106	78.8	75	76.3	73.8	67.5		
80									99.3	70	70	68.8	61.3		
84										85.9	92	62.5	62.5	56.3	
88											80.7	57.5	57.5	51.3	
92												74.9	51.3	46.3	
96													64.7	68.8	40
100														60	62.7
104															55
108															46.9

WORKING RADIUS AND LIFTING CAPACITY CHARTS

Lifting capacity chart of operating mode SWDBA (85°)

Main boom: 96m Suspended ballast: 500t Radius of suspended ballast: 29m Rear counterweight: 250t Central ballast: 96t Attached counterweight: 0t (Unit: t)															
Radius (m)	Jib length (m)														
	30	36	42	48	54	60	66	72	78	84	90	96	102		
22	351														
24	341	318	291												
26	329	306	281	256											
28	324	303	280	256	233										
30	306	290	269	249	226	201									
32	290	274	256	241	220	194	175	165							
34	273	259	244	230	213	194	170	161	150						
36	255	245	230	220	204	186	170	158	148	133					
38	236	229	219	209	196	180	166	156	145	130	119	149			
40		218	206	199	188	173	163	155	140	128	116	108	134		
44		195	184	179	171	163	153	144	136	126	110	103	93.8		
48			184	161	156	148	141	135	129	120	109	100	91.3		
52				143	140	135	131	125	120	113	103	95	88.8		
56				146	126	125	121	116	113	105	97.5	91.3	85		
60					131	113	109	106	104	98.8	91.3	86.3	80		
64						121	98.8	98.8	96.3	91.3	86.3	83.8	77.5		
68							100	90	90	87.5	85	81.3	78.8	73.8	
72								98.9	82.5	81.3	78.8	73.8	73.8	67.5	
76									98.4	75	72.5	68.8	67.5	61.3	
80										85.7	92.6	65	62.5	61.3	57.5
84											82.4	86.8	58.8	56.3	53.8
88												78.1	52.5	51.3	50
92													72.1	47.5	46.3
96													64	67.1	42.5
100														60.2	63.5
104															56.1
108															48.1

Lifting capacity chart of operating mode SWDBA (85°)

Main boom: 102m Suspended ballast: 500t Radius of suspended ballast: 29m Rear counterweight: 250t Central ballast: 96t Attached counterweight: 0t (Unit: t)																		
Radius (m)	Jib length (m)																	
	30	36	42	48	54	60	66	72	78	84	90	96	102					
22	315																	
24	309	286																
26	300	276	248															
28	296	274	249	225	204													
30	280	268	239	221	199	171												
32	266	253	230	219	194	163	150											
34	242	240	220	209	190	169	145	134	130									
36	220	229	208	201	183	163	146	130	128	110								
38	205	211	199	194	176	158	144	134	125	108	100							
40	181	199	190	185	170	150	144	136	119	108	96.3	91.3						
44		168	173	169	158	148	136	124	120	113	87.5	86.3	81.3					
48			153	155	148	133	126	119	116	108	91.3	86.3	78.8					
52				138	135	125	120	111	108	101	85	81.3	78.8					
56					126	125	121	114	106	104	93.8	82.5	80	76.3				
60						114	110	101	96.3	96.3	88.8	80	76.3	71.3				
64							105	95	92.5	91.3	83.8	77.5	76.3	71.3				
68								88.5	87.5	86.3	81.3	78.8	73.8	72.5	68.8			
72									86.7	81.3	76.3	73.8	63.8	67.5	62.5			
76										86.4	71.3	70	61.3	61.3	55			
80											75.2	81.2	60	55	53.8			
84												71.9	52.5	55	50	51.3		
88													68.1	47.5	45	48.8		
92														58.6	64.3	43.8	46.3	
96															56.1	60	45	
100																52.8	40	
104																	44.9	49.3
108																		42.5